

CATALOGUE NO. 8301.0

EMBARGOED UNTIL 11:30 AM THURSDAY 30 MAY 1996

MANUFACTURING PRODUCTION, AUSTRALIA, APRIL 1996

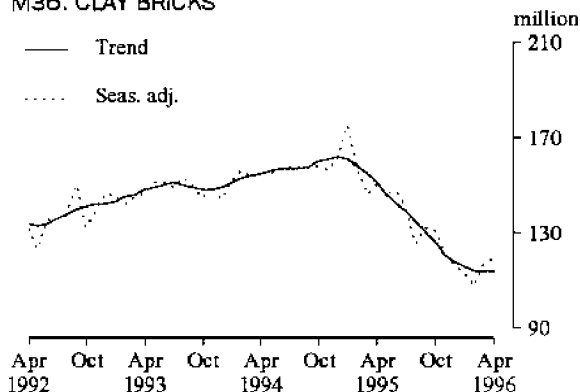
KEY POINTS

This publication presents monthly and quarterly estimates of selected major indicators of manufacturing production for Australia.

General trends Latest trends indicate that of the 59 indicators available, 24 showed rising production trends, 21 showed falling trends while 14 were relatively stable.

Series trends Two of the more notable trends were Rigid PVC tubes, pipes and hoses, and Clay bricks. Production of Rigid PVC tubes, pipes and hoses rose 6.1%, continuing a rising trend since October 1995. Clay brick production rose 0.3%, ending a continuous fall since December 1994.

M36. CLAY BRICKS



NOTES

There are two graphs shown for each available manufactured commodity. The left hand graph shows seasonally adjusted (where available) and trend estimates over the last four years. The right hand graph presents a short term sensitivity analysis of the trend estimates. The sensitivity analysis shows the current trend and two possible scenarios of how the trend might move if the next seasonally adjusted estimate rises or falls by the historical average monthly or quarterly movement for that series. A worked example is shown in the Technical Note on page 25.

Because of continuing unavailability of data due to confidentiality restrictions, the series M24 Paper has been removed from this publication.

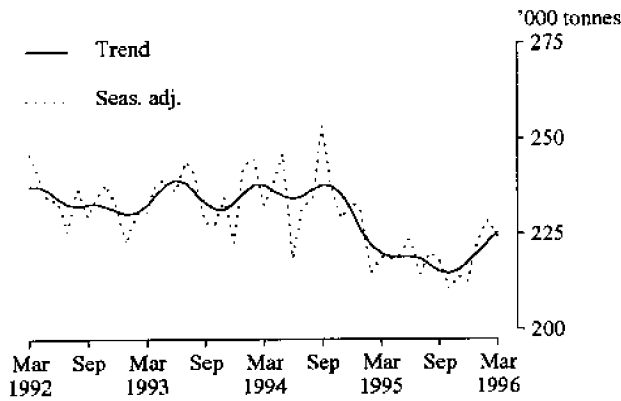
W. McLennan
Australian Statistician

INQUIRIES

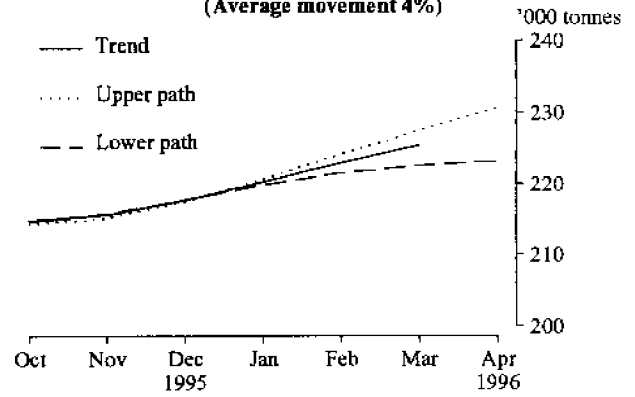
- for further information about these and related unpublished statistics, contact Jeffrey Middleton on Sydney (02) 268 4541.
- for information about other ABS statistics and services, please refer to the back of this publication.

PRODUCTION STATISTICS, AUSTRALIA: LONGER TERM TRENDS(a) AND SHORT TERM SENSITIVITY ANALYSIS
MONTHLY GRAPHS

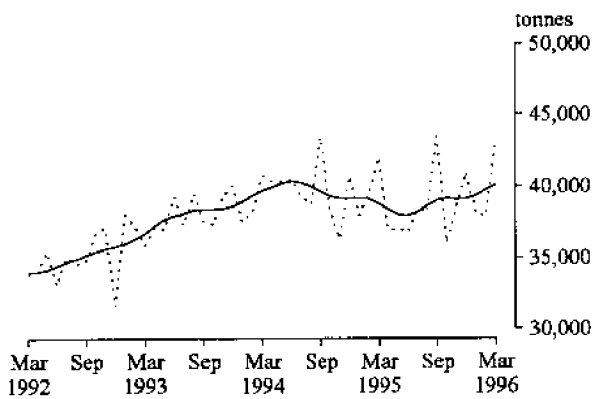
M1. RED MEAT



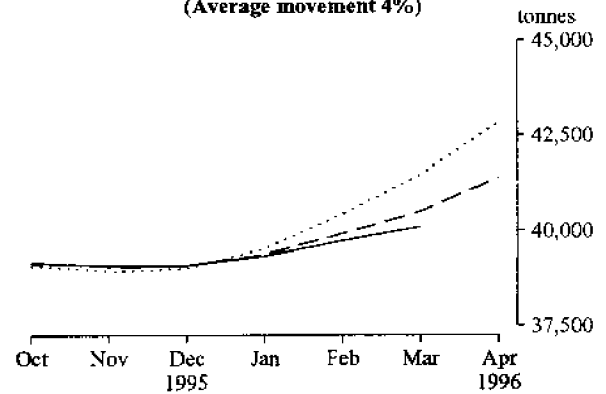
M1. RED MEAT
(Average movement 4%)



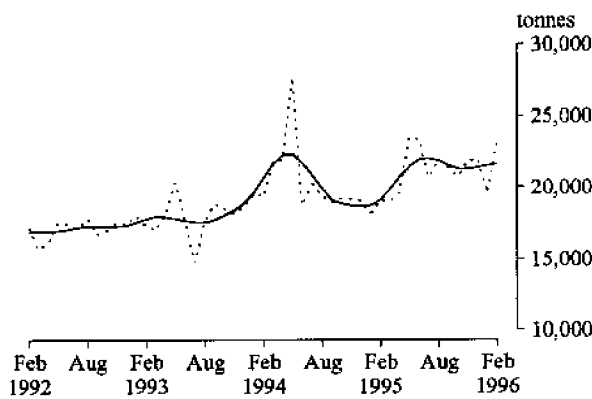
M2. CHICKEN MEAT



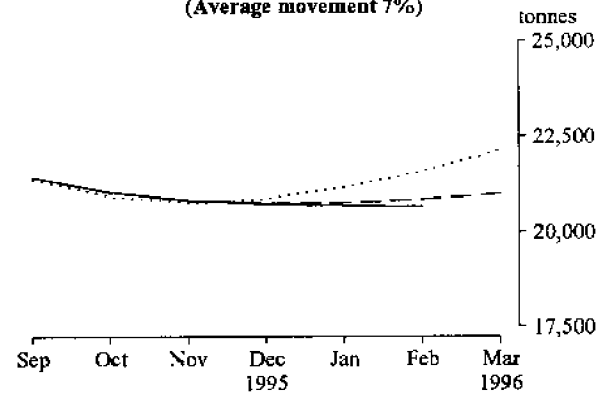
M2. CHICKEN MEAT
(Average movement 4%)



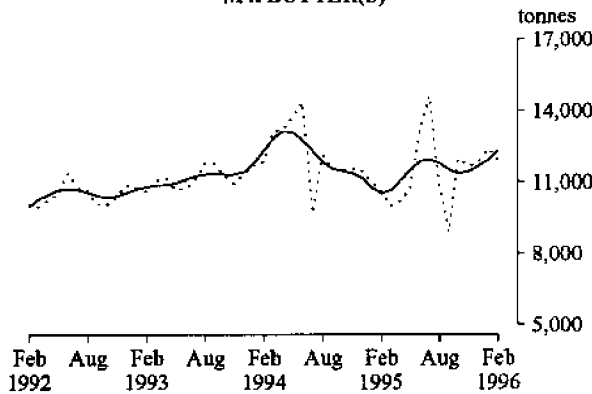
M3. CHEESE(b)



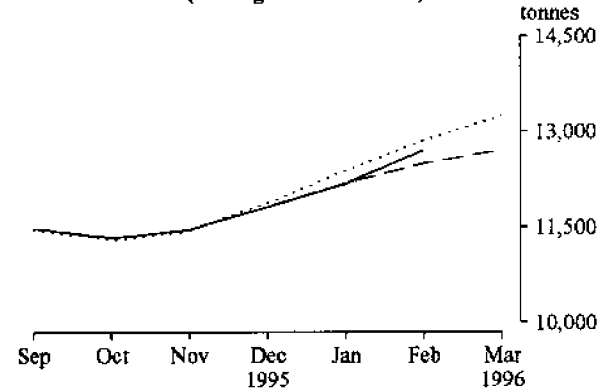
M3. CHEESE(b)
(Average movement 7%)



M4. BUTTER(b)



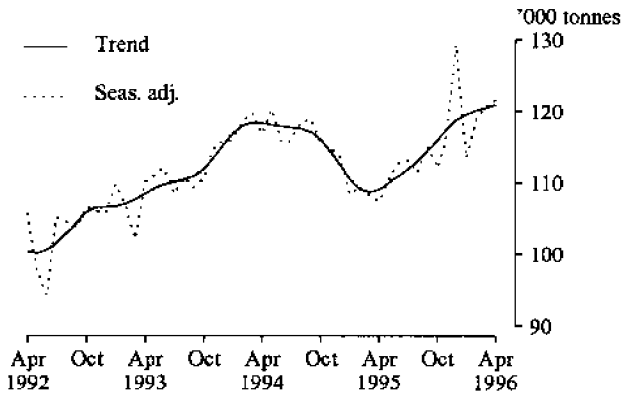
M4. BUTTER(b)
(Average movement 7%)



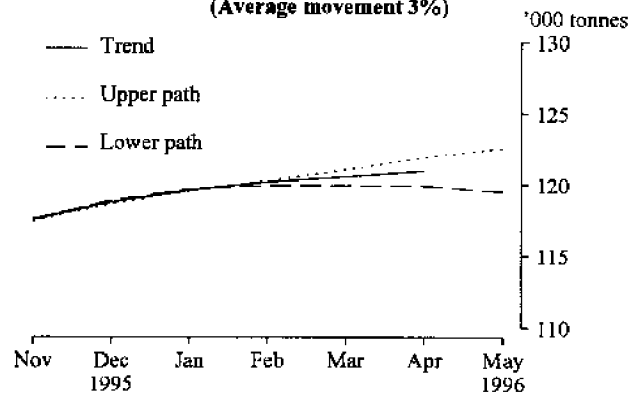
For footnotes see end of tables.

MONTHLY GRAPHS

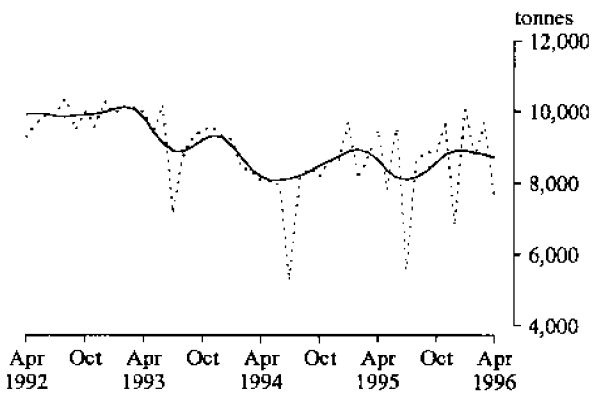
M5. FLOUR OF WHEAT OR OF MESLIN



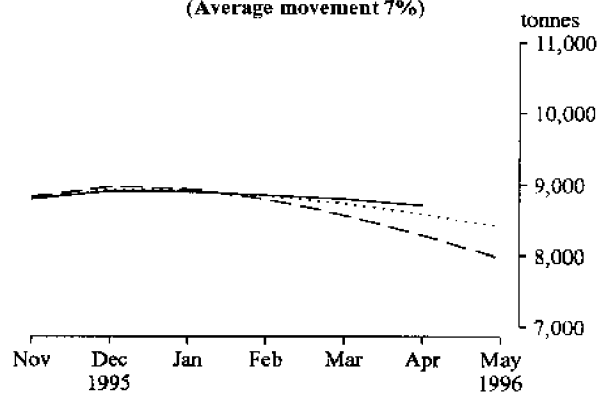
M5. FLOUR OF WHEAT OR OF MESLIN
(Average movement 3%)



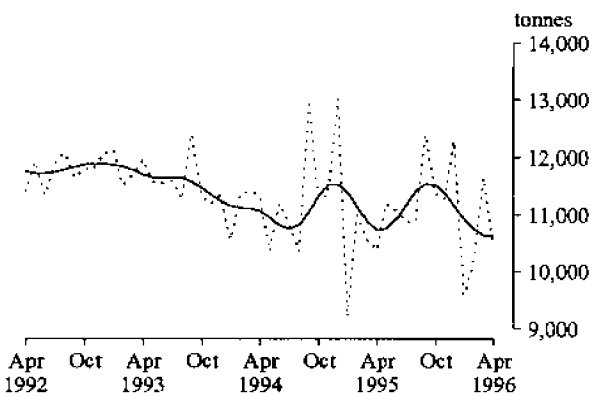
M6. PREPARED FOODS FROM CEREALS



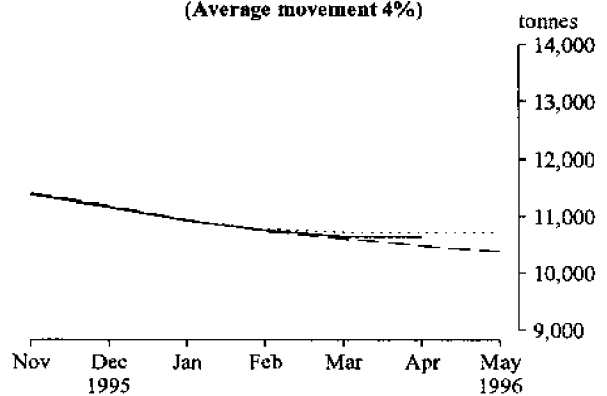
M6. PREPARED FOODS FROM CEREALS
(Average movement 7%)



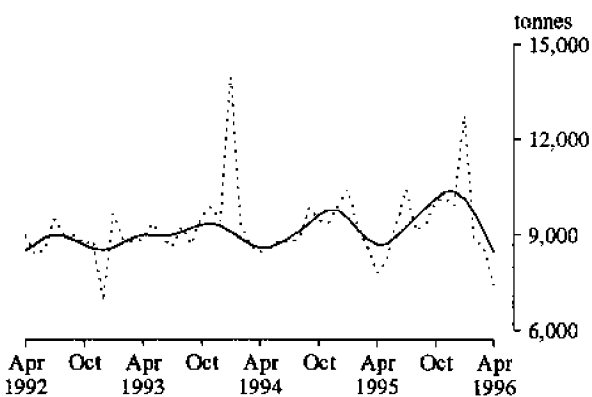
M7. BISCUITS



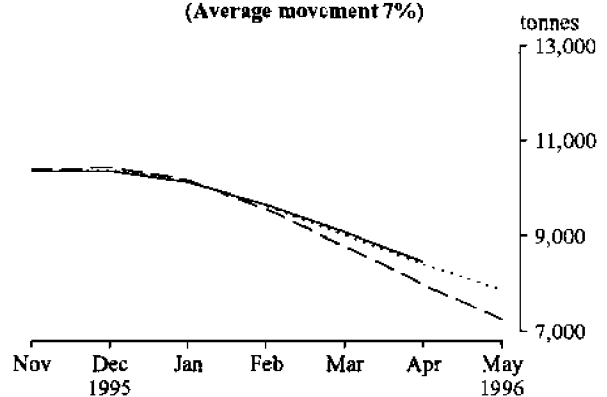
M7. BISCUITS
(Average movement 4%)



M8. CHOCOLATE BASED CONFECTIONERY



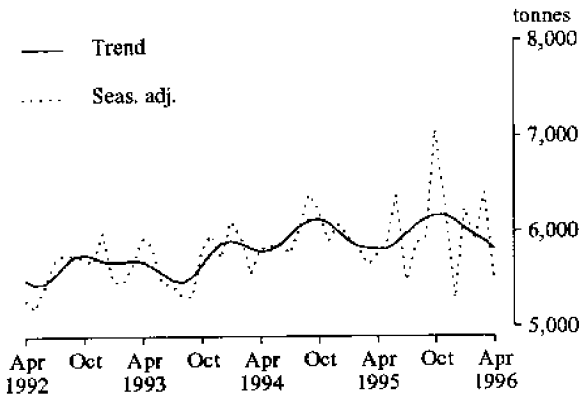
M8. CHOCOLATE BASED CONFECTIONERY
(Average movement 7%)



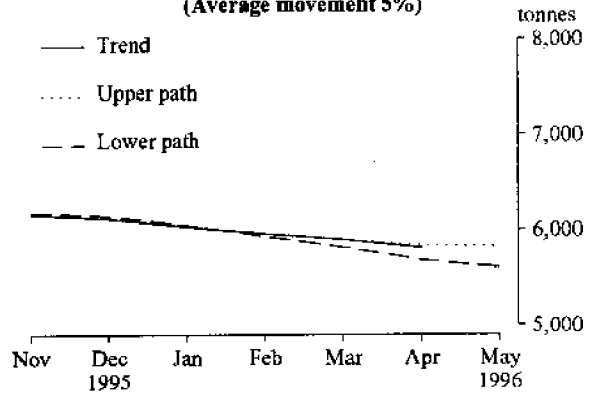
For footnotes see end of tables.

MONTHLY GRAPHS

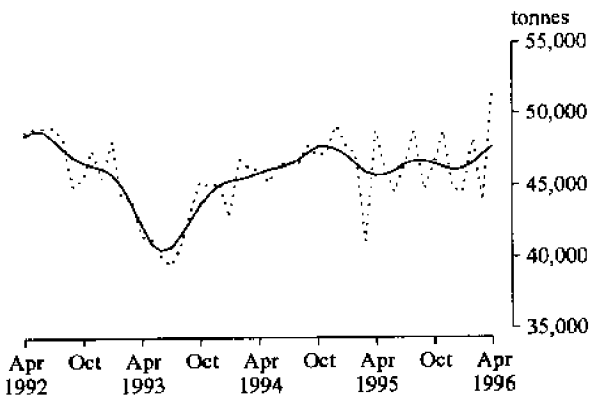
M9. OTHER CONFECTIONERY



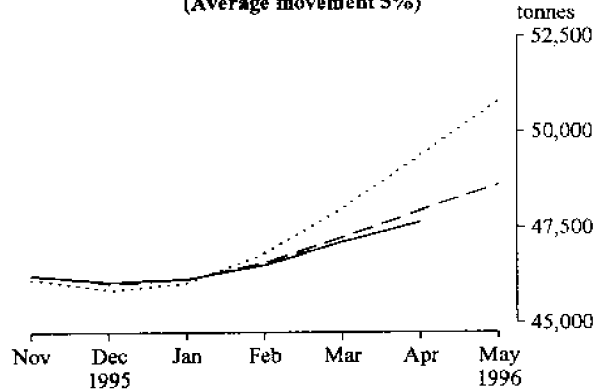
M9. OTHER CONFECTIONERY
(Average movement 5%)



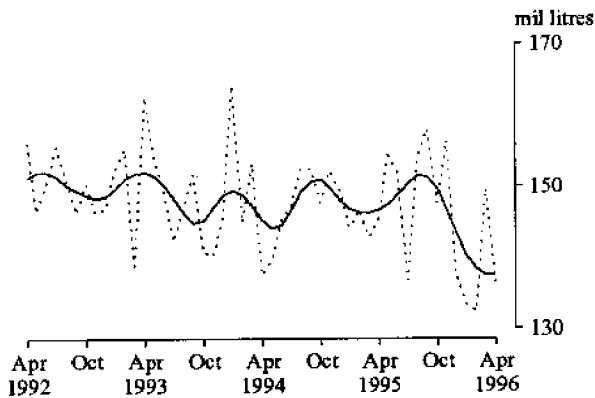
M10. MALT



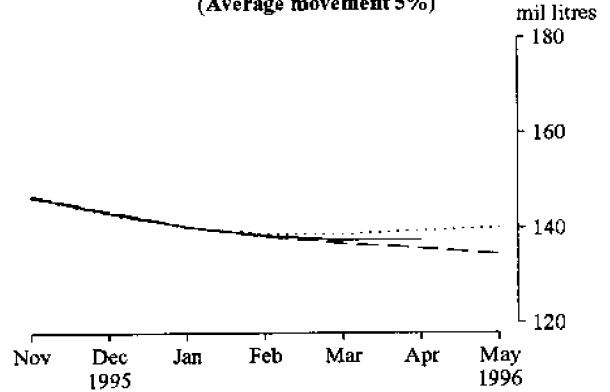
M10. MALT
(Average movement 5%)



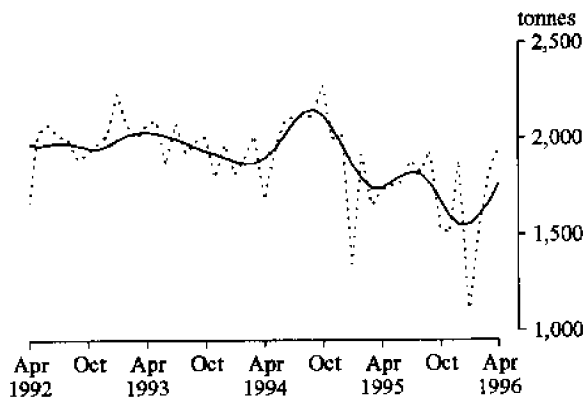
M11. BEER



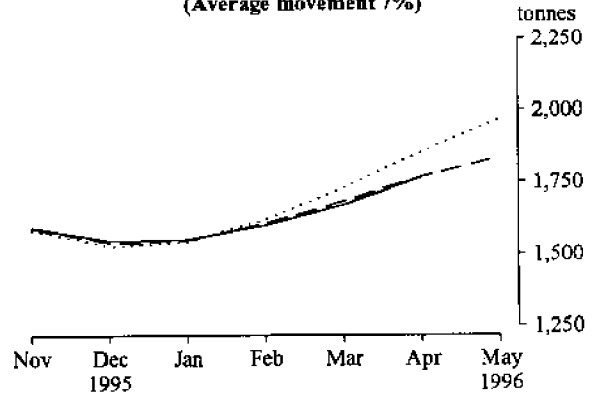
M11. BEER
(Average movement 5%)



M12. TOBACCO AND CIGARETTES(c)



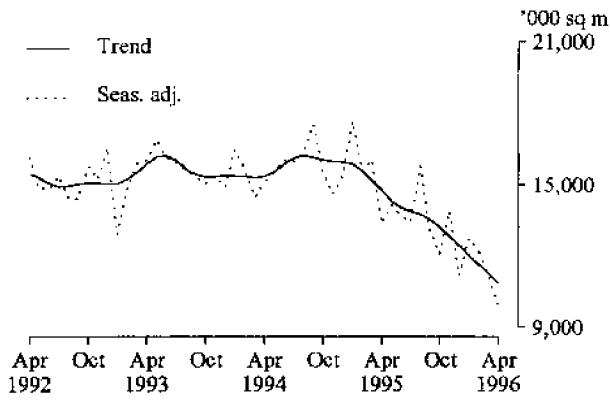
M12. TOBACCO AND CIGARETTES(c)
(Average movement 7%)



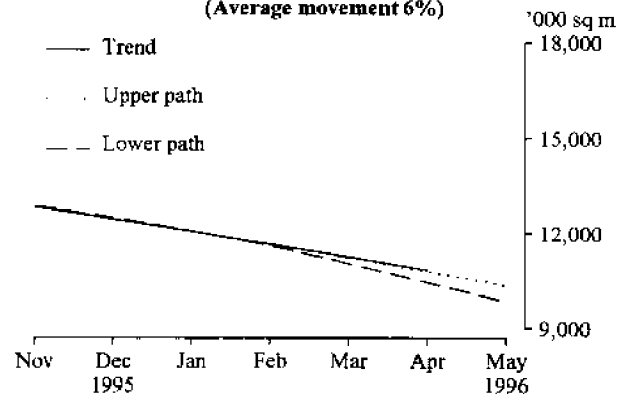
For footnotes see end of tables.

MONTHLY GRAPHS

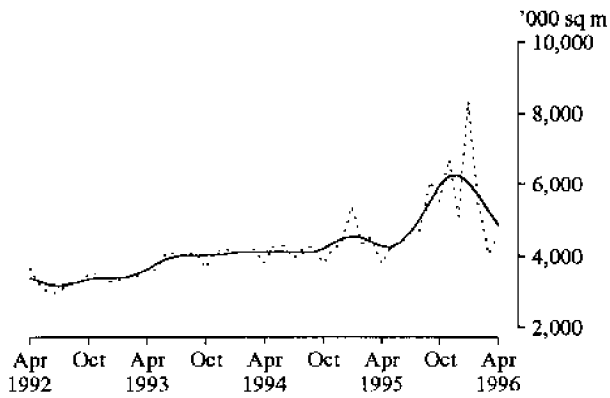
M13. MAN-MADE FIBRE WOVEN FABRIC(d)



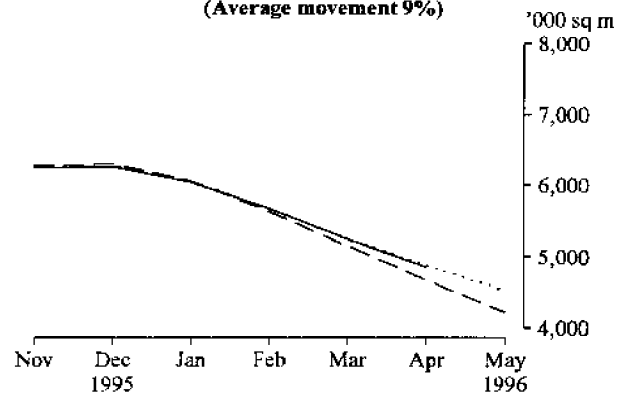
M13. MAN-MADE FIBRE WOVEN FABRIC(d)
(Average movement 6%)



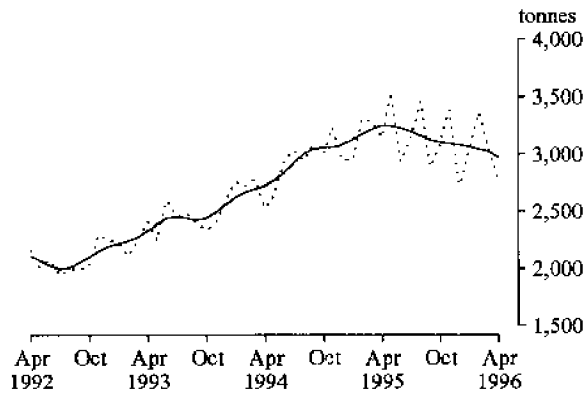
M14. COTTON WOVEN FABRIC(d)



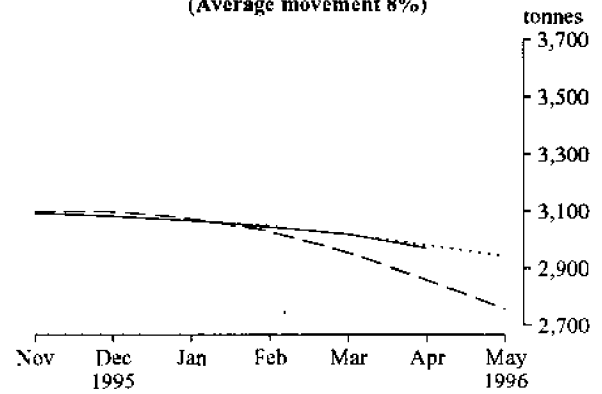
M14. COTTON WOVEN FABRIC(d)
(Average movement 9%)



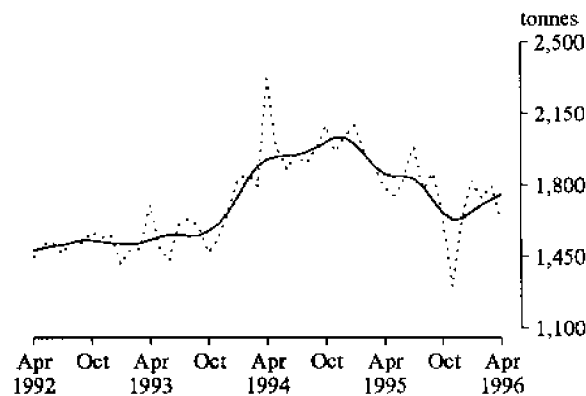
M15. COTTON YARN



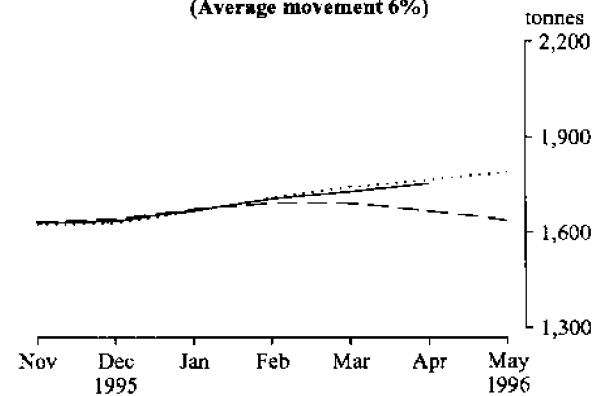
M15. COTTON YARN
(Average movement 8%)



M16. WOOL YARN



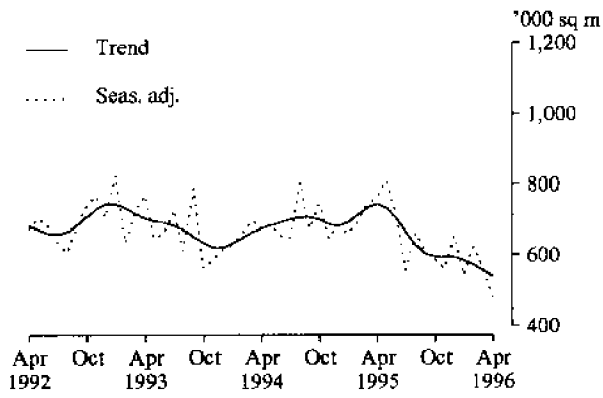
M16. WOOL YARN
(Average movement 6%)



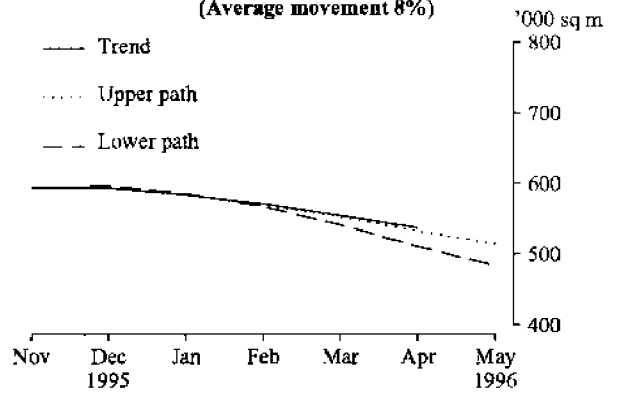
For footnotes see end of tables.

MONTHLY GRAPHS

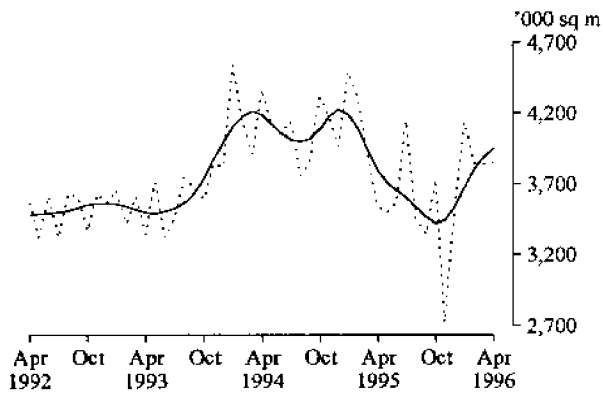
M17. WOOL WOVEN FABRIC



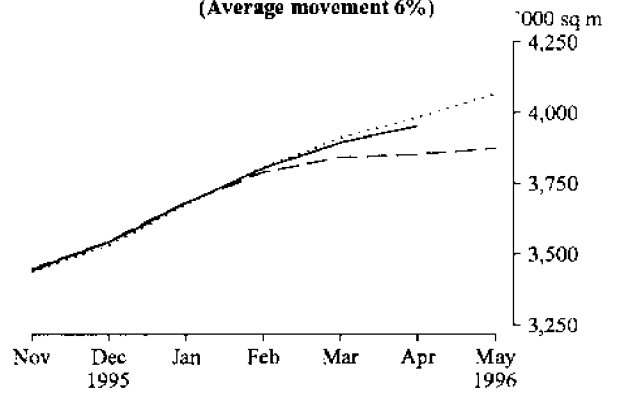
M17. WOOL WOVEN FABRIC
(Average movement 8%)



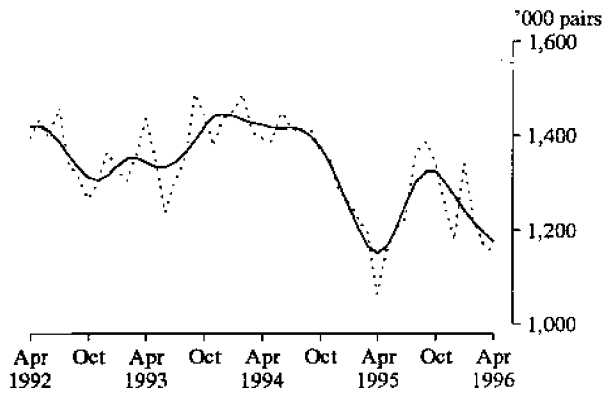
M18. TEXTILE FLOOR COVERINGS



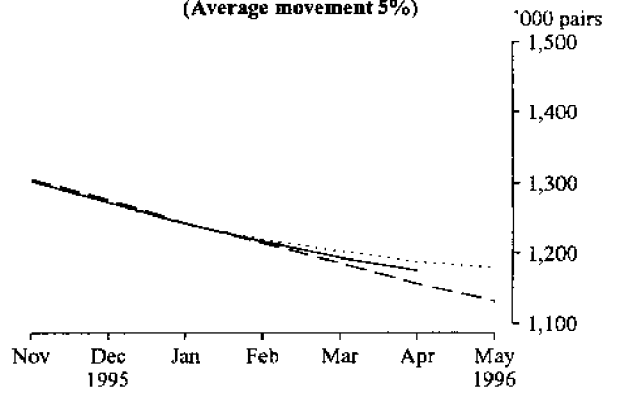
M18. TEXTILE FLOOR COVERINGS
(Average movement 6%)



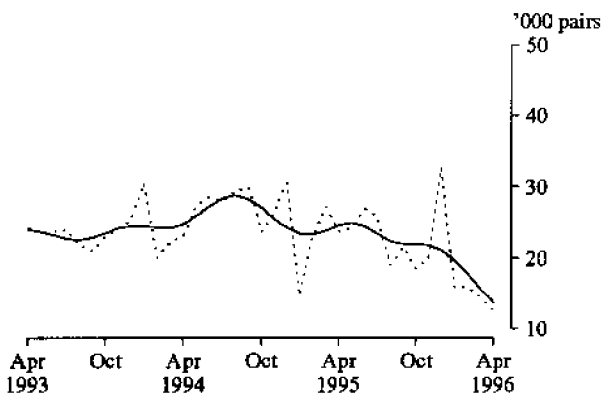
M19. FOOTWEAR (EXCLUDING SPORTS FOOTWEAR)



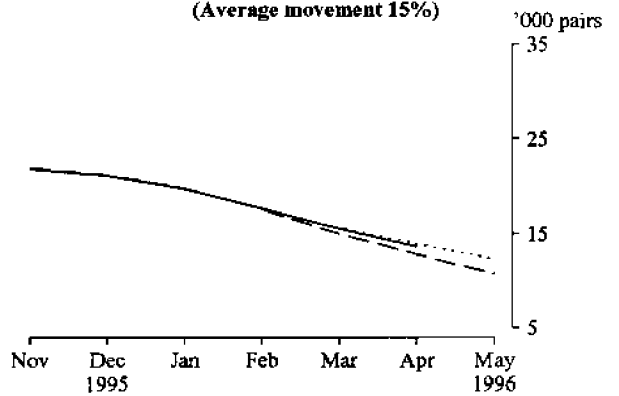
M19. FOOTWEAR (EXCLUDING SPORTS FOOTWEAR)
(Average movement 5%)



M20. SPORTS FOOTWEAR



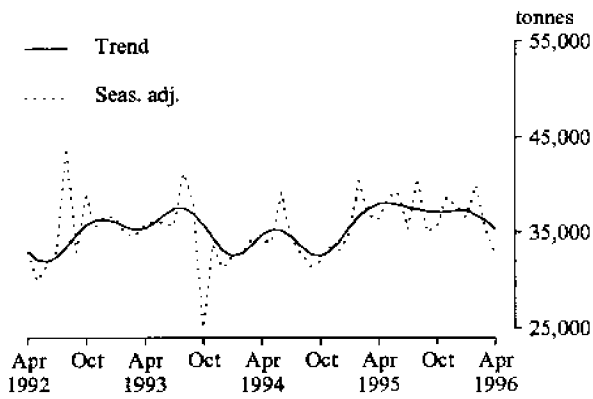
M20. SPORTS FOOTWEAR
(Average movement 15%)



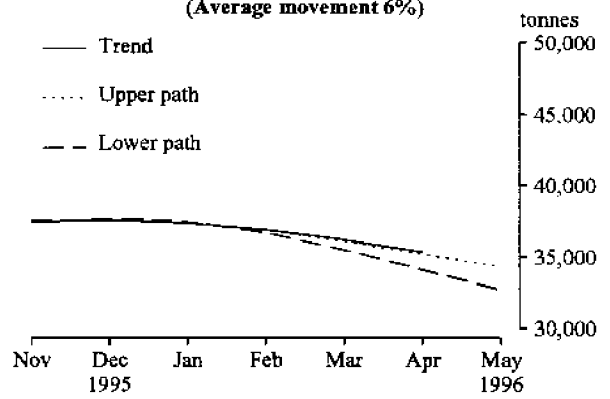
For footnotes see end of tables.

MONTHLY GRAPHS

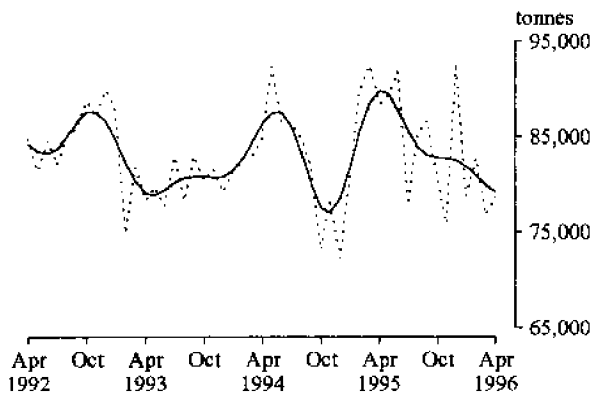
M21. NEWSPRINT



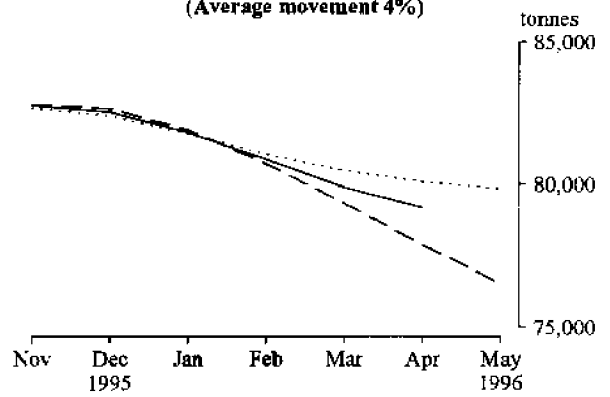
M21. NEWSPRINT
(Average movement 6%)



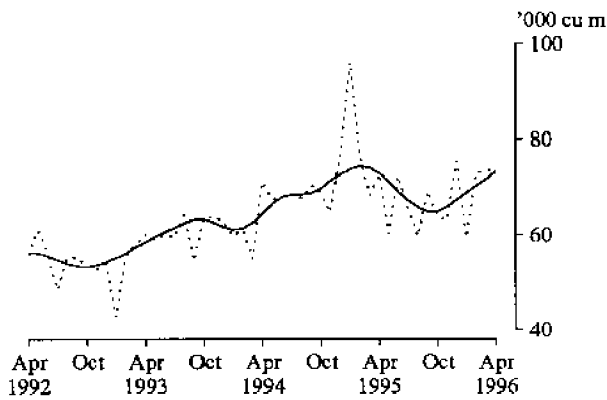
M22. WOOD PULP



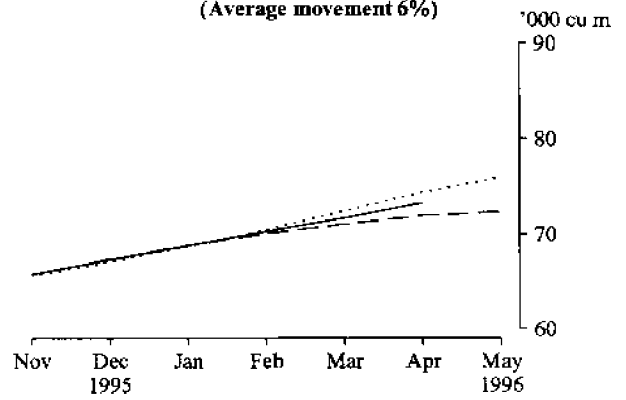
M22. WOOD PULP
(Average movement 4%)



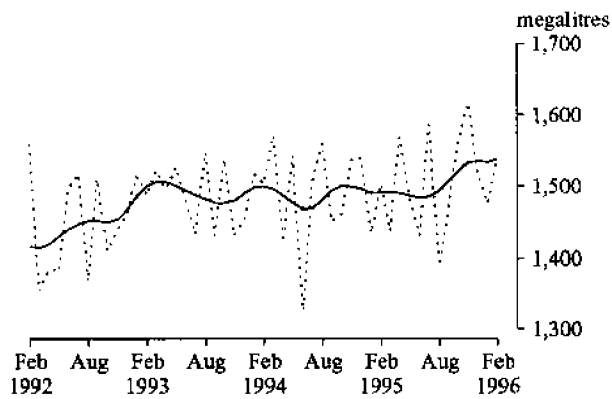
M23. UNLAMINATED PARTICLE BOARD



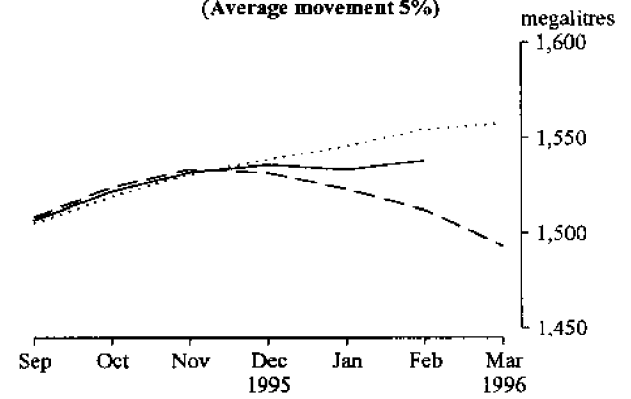
M23. UNLAMINATED PARTICLE BOARD
(Average movement 6%)



M26. AUTOMOTIVE GASOLINE(e)



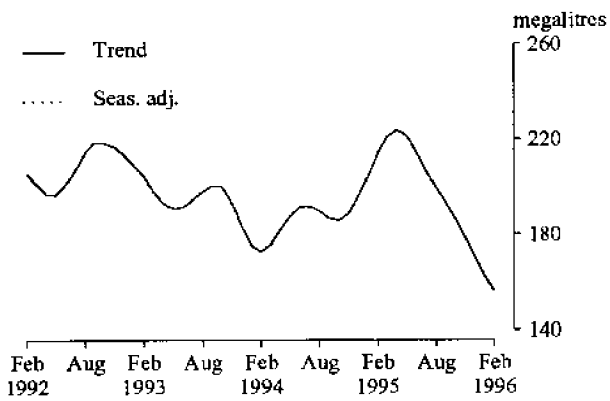
M26. AUTOMOTIVE GASOLINE(e)
(Average movement 5%)



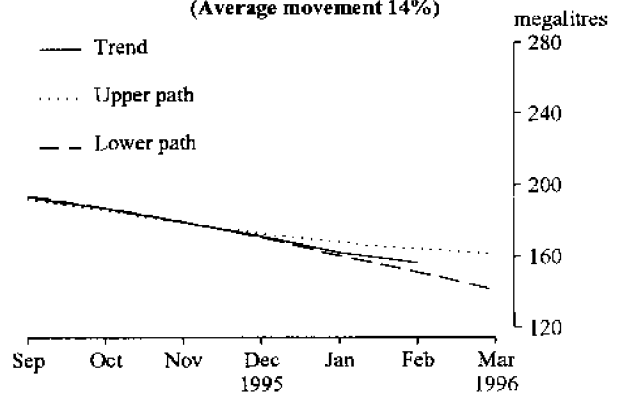
For footnotes see end of tables.

MONTHLY GRAPHS

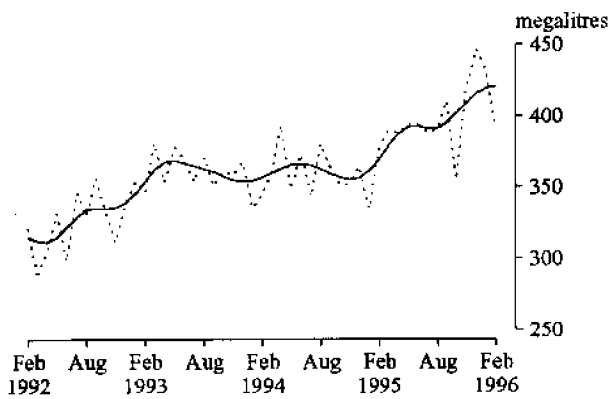
M27. FUEL OIL(e)



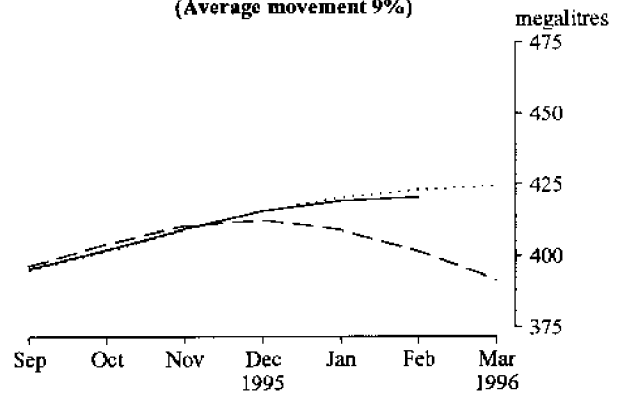
M27. FUEL OIL(e)
(Average movement 14%)



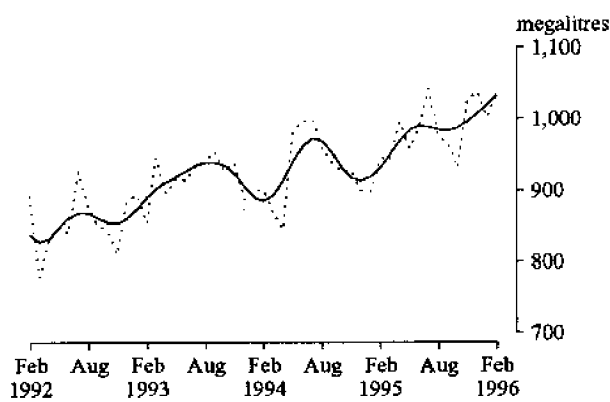
M28. AVIATION TURBINE FUEL(e)



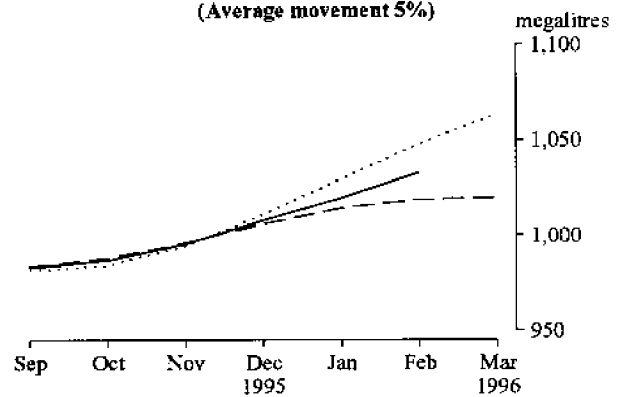
M28. AVIATION TURBINE FUEL(e)
(Average movement 9%)



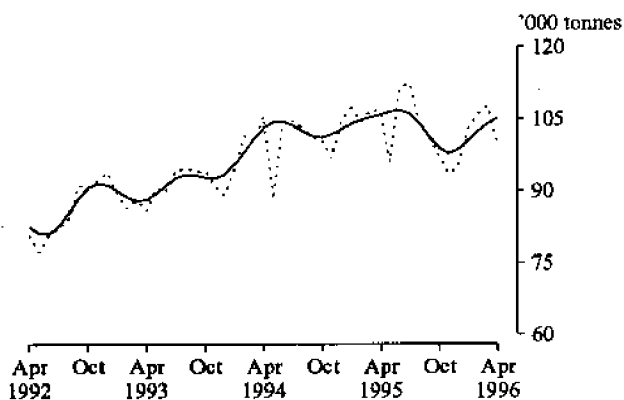
M29. AUTOMOTIVE DIESEL OIL(e)



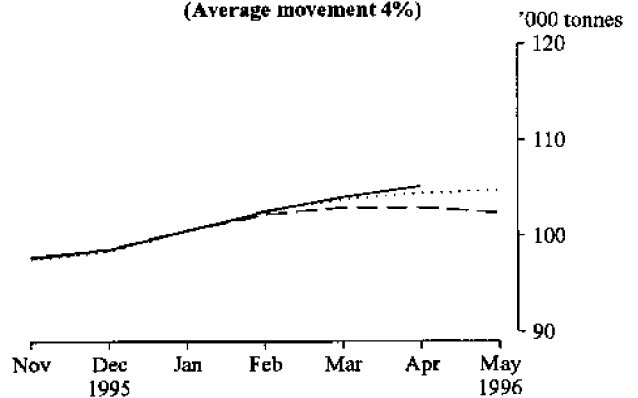
M29. AUTOMOTIVE DIESEL OIL(e)
(Average movement 5%)



M30. PLASTICS IN PRIMARY FORMS



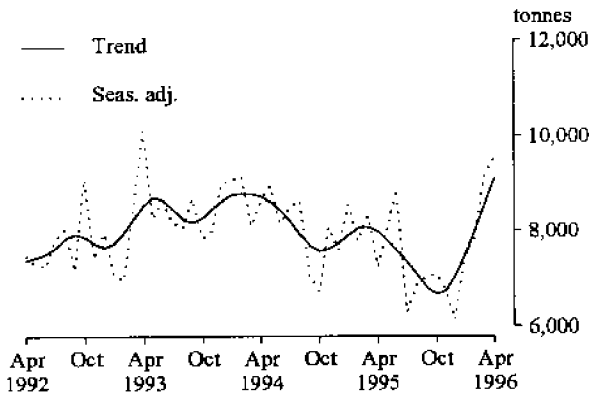
M30. PLASTICS IN PRIMARY FORMS
(Average movement 4%)



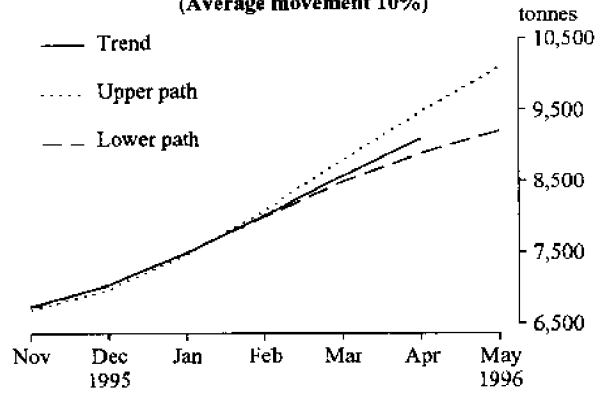
For footnotes see end of tables.

MONTHLY GRAPHS

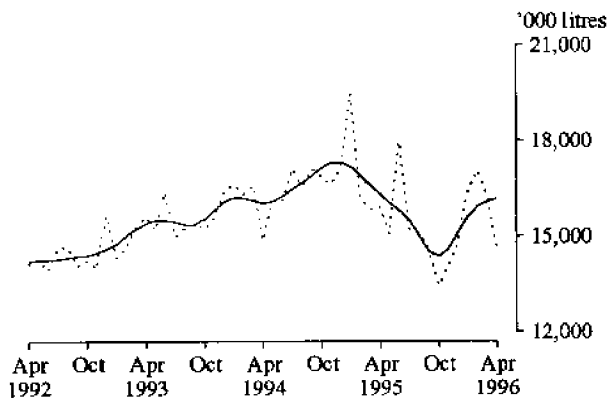
M31. RIGID PVC TUBES, PIPES AND HOSES



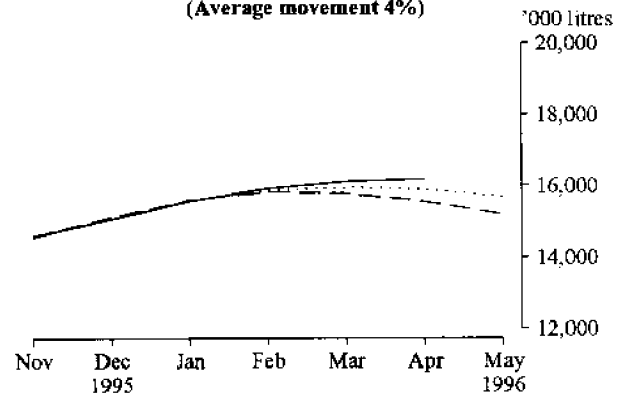
M31. RIGID PVC TUBES, PIPES AND HOSES
(Average movement 10%)



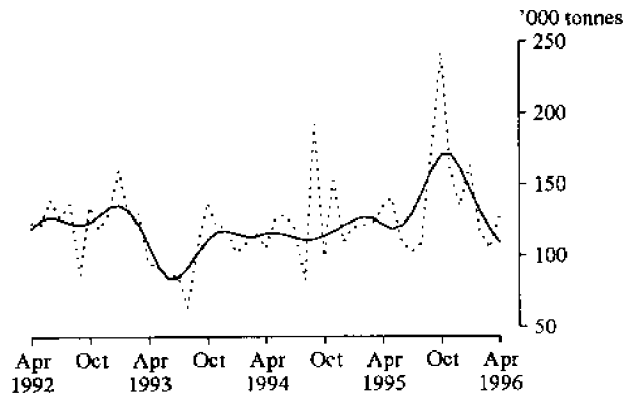
M33. PAINT



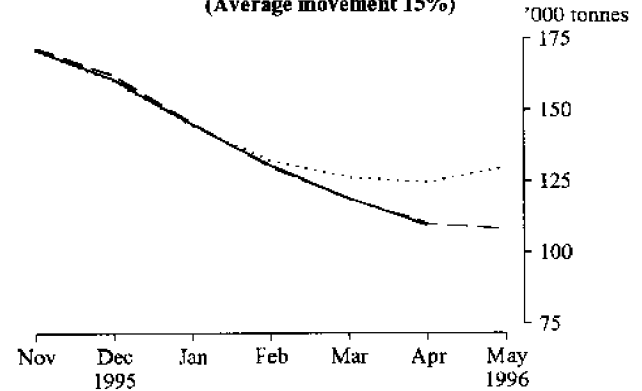
M33. PAINT
(Average movement 4%)



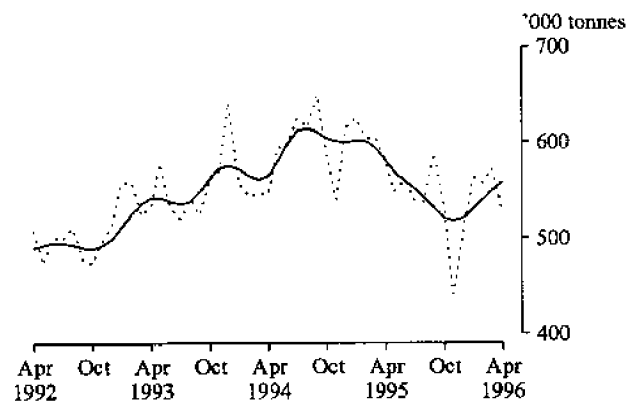
M34. SUPERPHOSPHATES



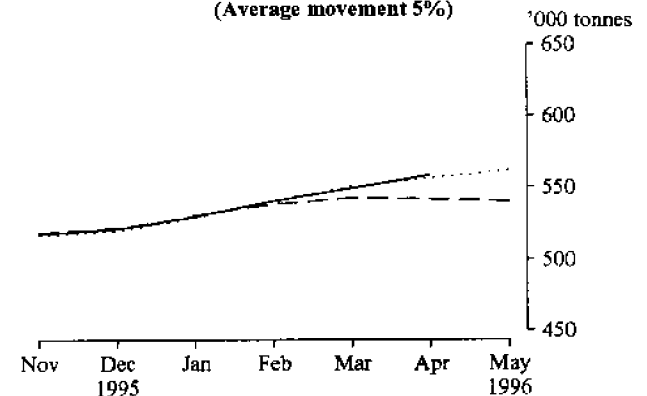
M34. SUPERPHOSPHATES
(Average movement 15%)



M35. PORTLAND CEMENT



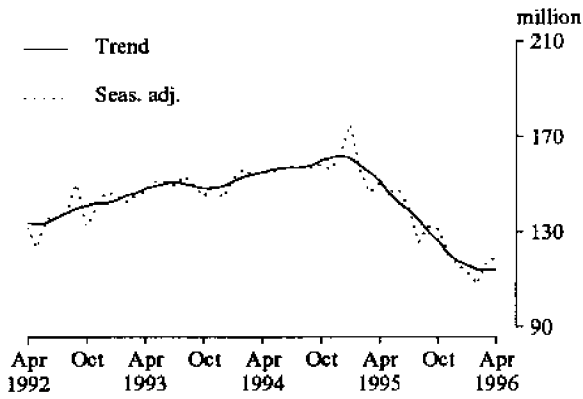
M35. PORTLAND CEMENT
(Average movement 5%)



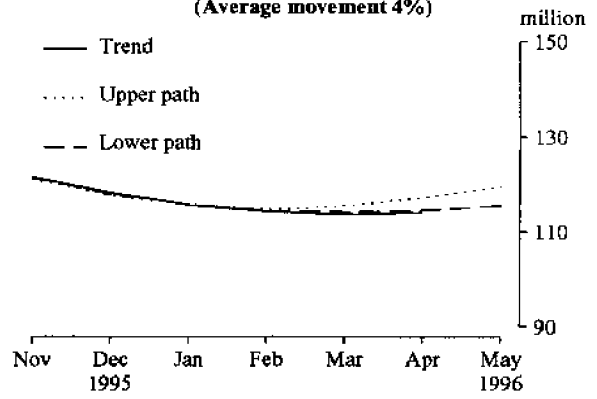
For footnotes see end of tables.

MONTHLY GRAPHS

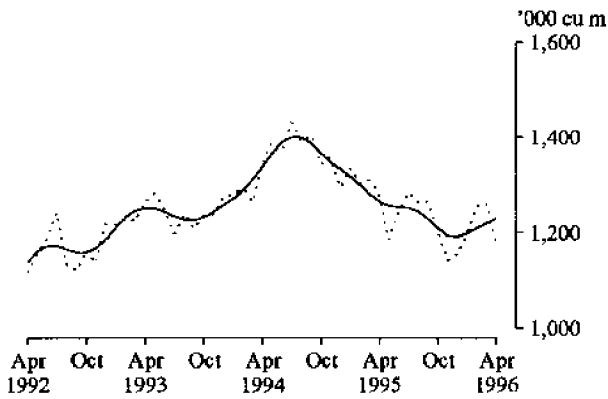
M36. CLAY BRICKS



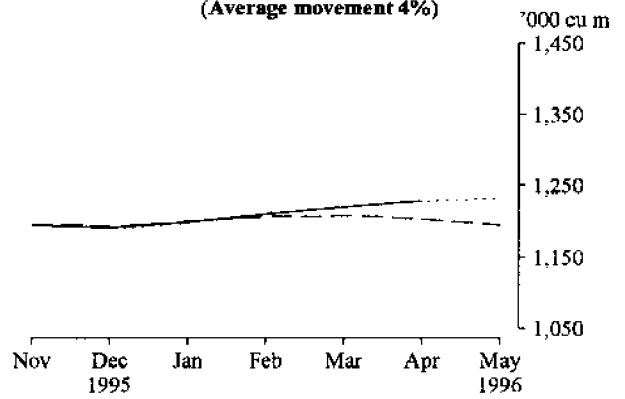
M36. CLAY BRICKS
(Average movement 4%)



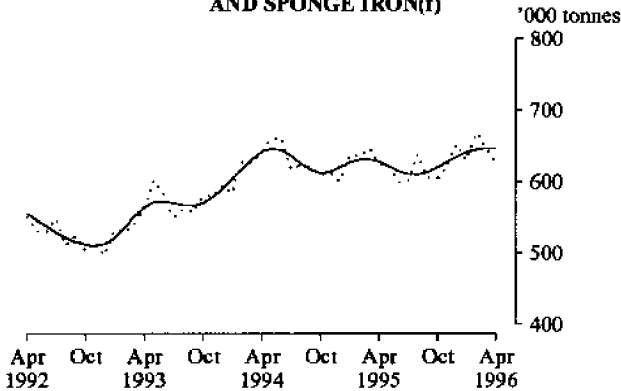
M37. READY MIXED CONCRETE



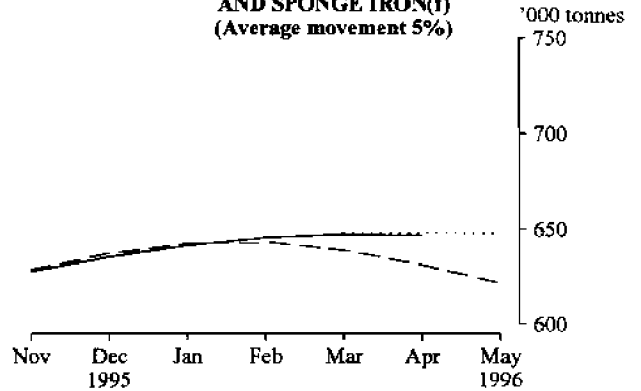
M37. READY MIXED CONCRETE
(Average movement 4%)



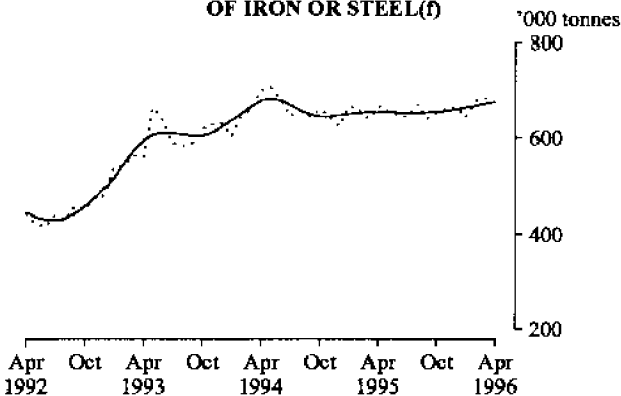
M38. BASIC IRON, SPIEGELEISEN
AND SPONGE IRON(f)



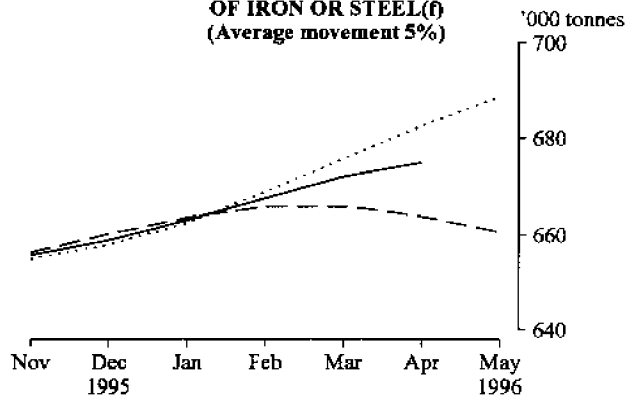
M38. BASIC IRON, SPIEGELEISEN
AND SPONGE IRON(f)
(Average movement 5%)



M39. BLOOMS AND SLABS
OF IRON OR STEEL(f)



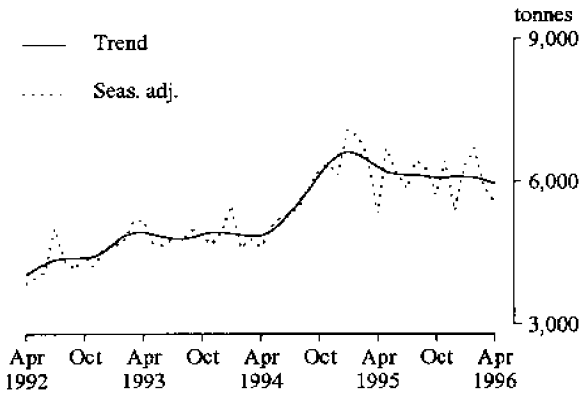
M39. BLOOMS AND SLABS
OF IRON OR STEEL(f)
(Average movement 5%)



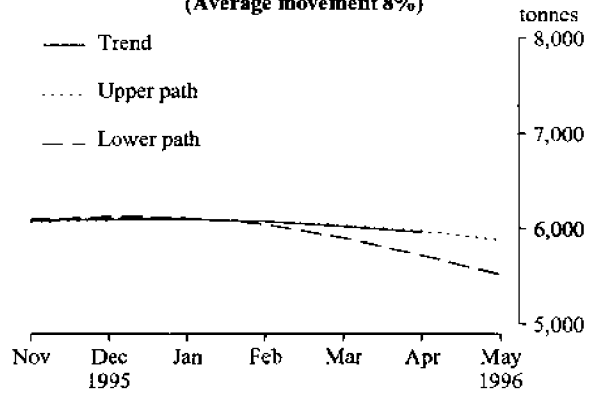
For footnotes see end of tables.

MONTHLY GRAPHS

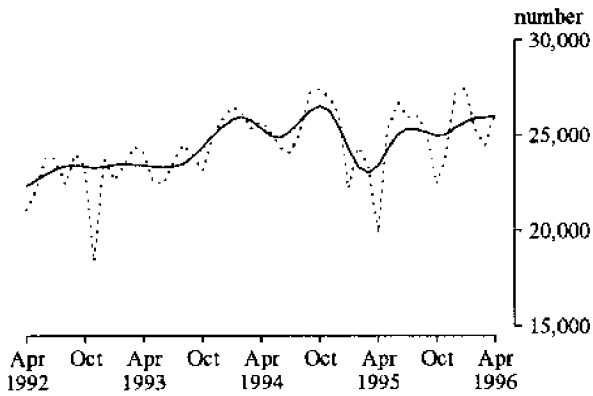
M40. INSULATED WIRE



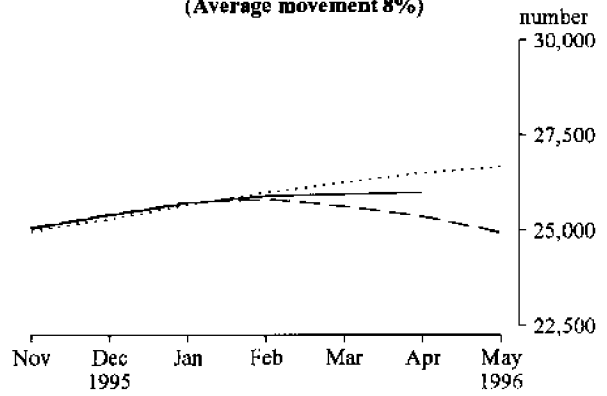
M40. INSULATED WIRE
(Average movement 8%)



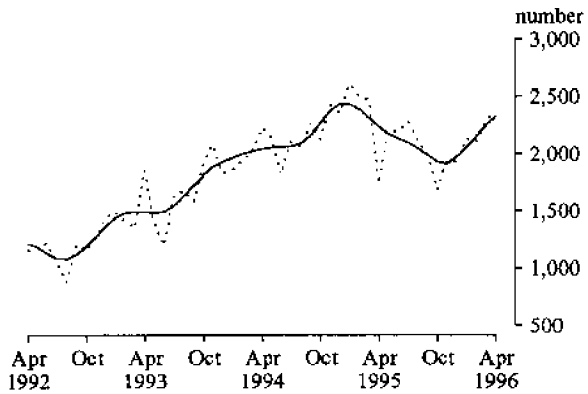
M41. CARS AND STATION WAGONS



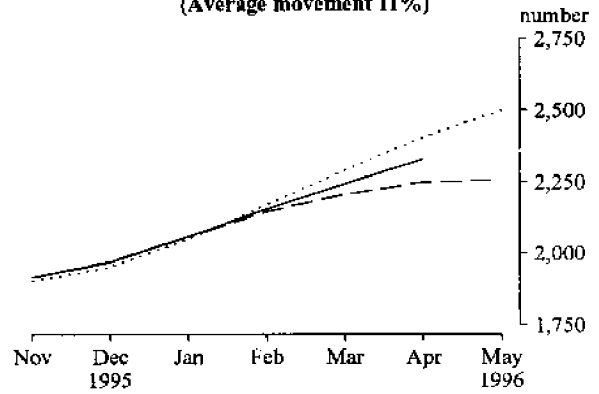
M41. CARS AND STATION WAGONS
(Average movement 8%)



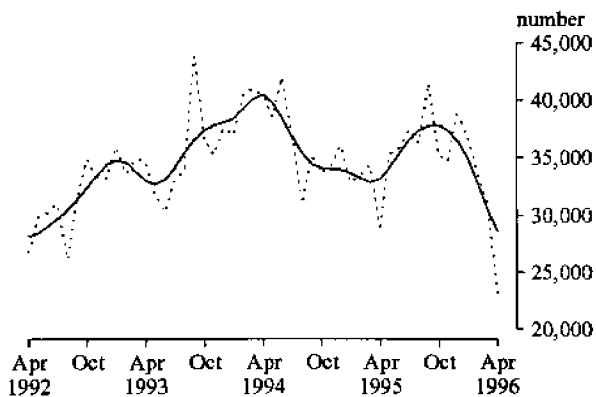
M42. VEHICLES FOR GOODS AND MATERIALS



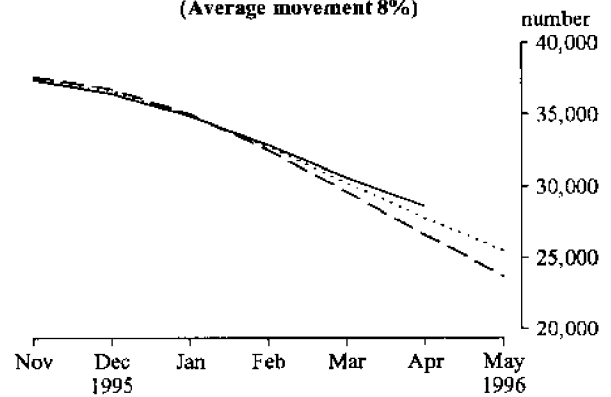
M42. VEHICLES FOR GOODS AND MATERIALS
(Average movement 11%)



M44. DOMESTIC REFRIGERATORS



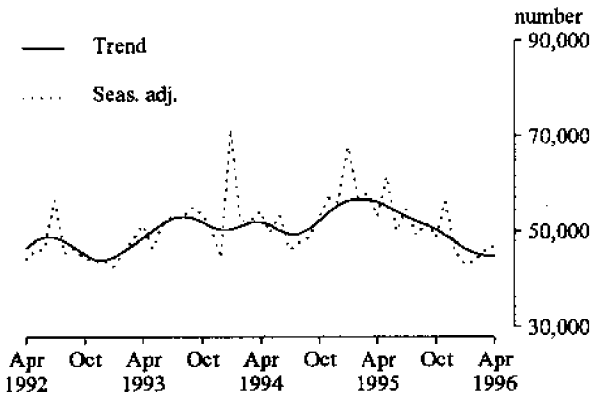
M44. DOMESTIC REFRIGERATORS
(Average movement 8%)



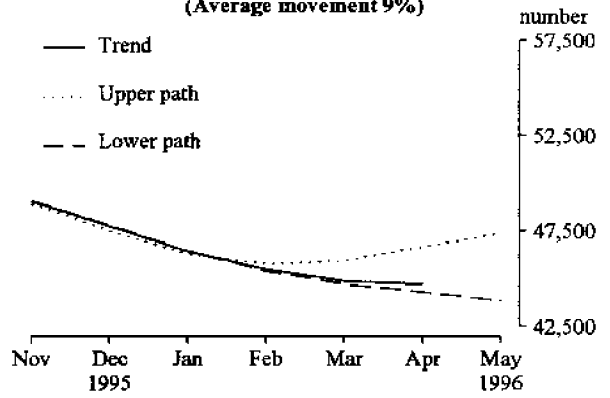
For footnotes see end of tables.

MONTHLY GRAPHS

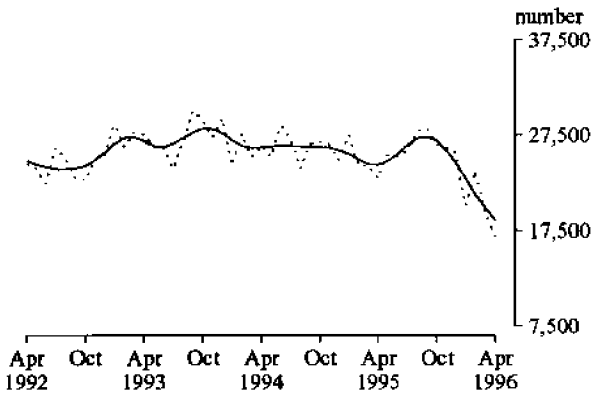
M45. WATER HEATERS



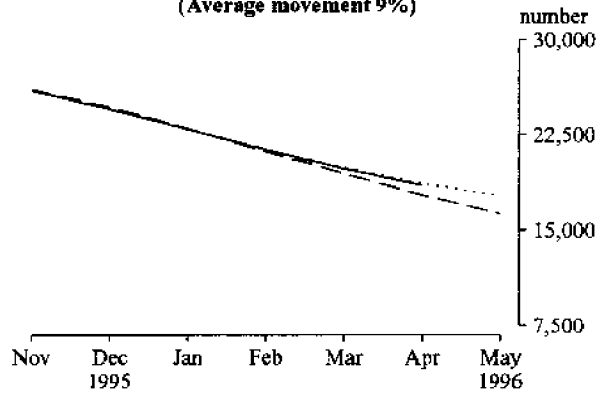
M45. WATER HEATERS
(Average movement 9%)



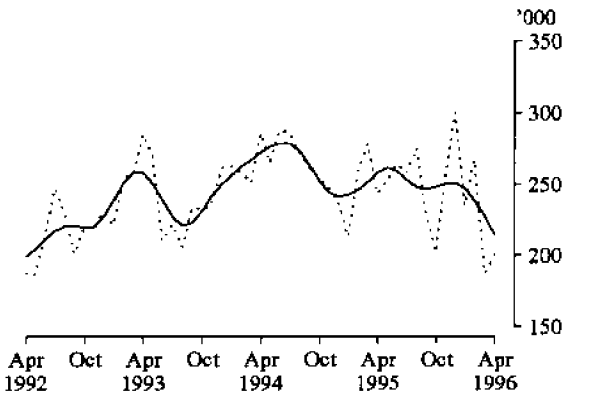
M46. DOMESTIC CLOTHES WASHING MACHINES



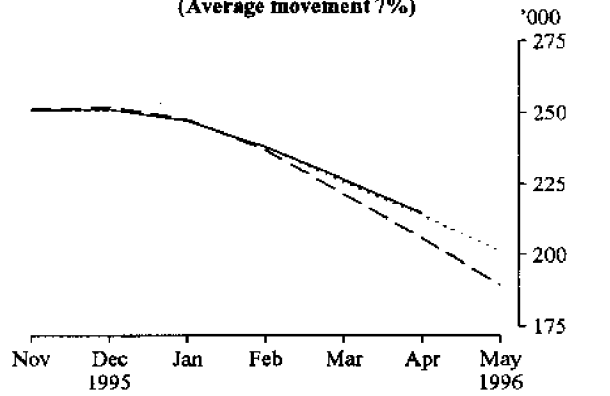
M46. DOMESTIC CLOTHES WASHING MACHINES
(Average movement 9%)



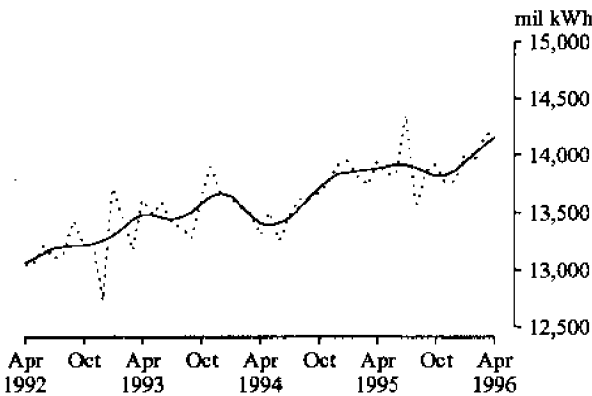
M47. ELECTRIC MOTORS



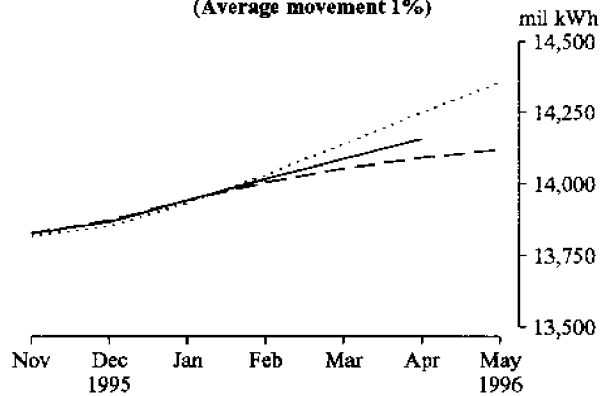
M47. ELECTRIC MOTORS
(Average movement 7%)



M48. ELECTRICITY



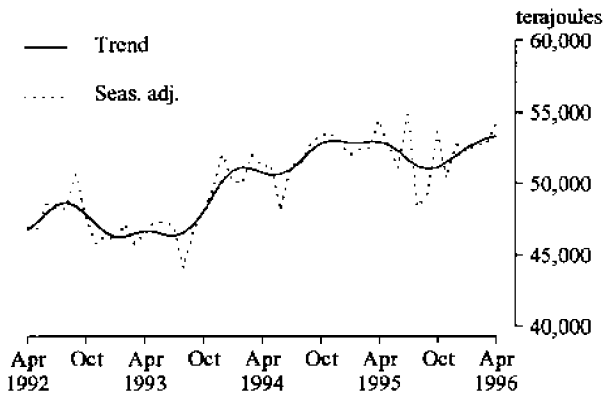
M48. ELECTRICITY
(Average movement 1%)



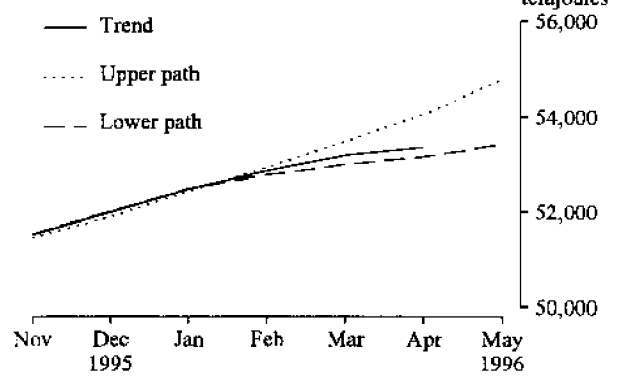
For footnotes see end of tables.

MONTHLY GRAPHS

M49. GAS

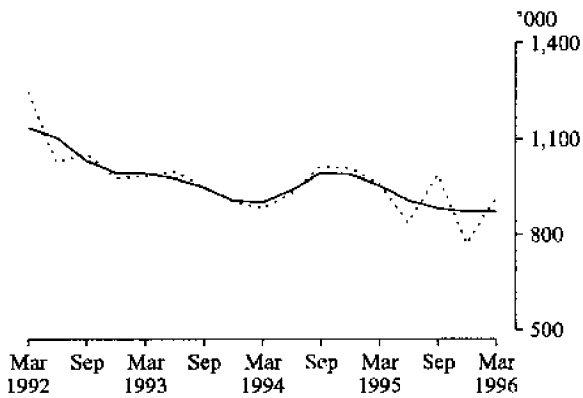


M49. GAS
(Average movement 3%)

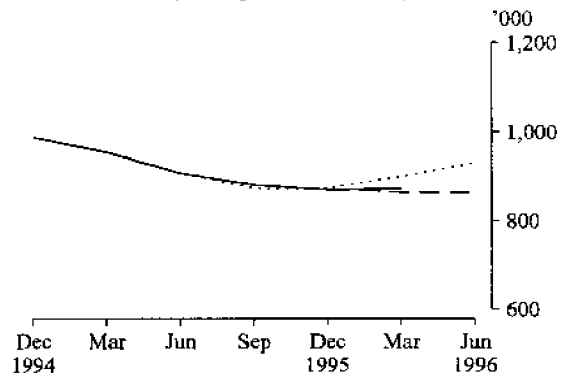


QUARTERLY GRAPHS

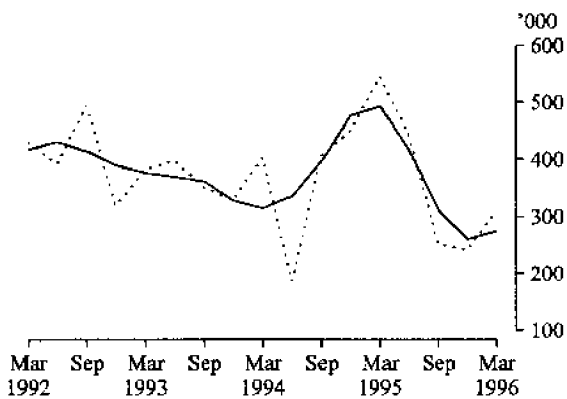
Q1. MEN'S AND BOYS' LONG TROUSERS



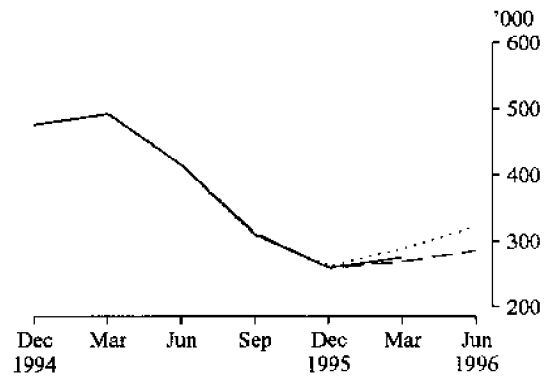
Q1. MEN'S AND BOYS' LONG TROUSERS
(Average movement 7%)



Q2. WOMEN'S AND GIRLS' LONG TROUSERS



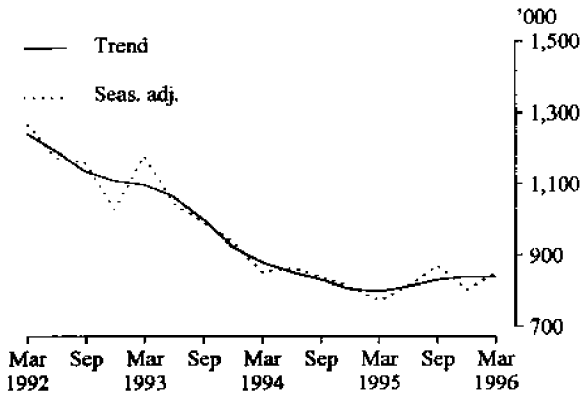
Q2. WOMEN'S AND GIRLS' LONG TROUSERS
(Average movement 11%)



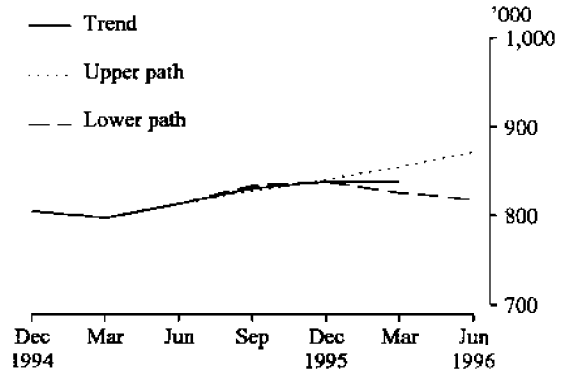
For footnotes see end of tables.

QUARTERLY GRAPHS

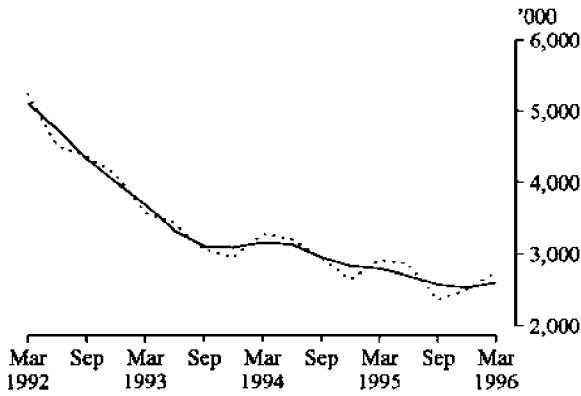
Q3. JEANS



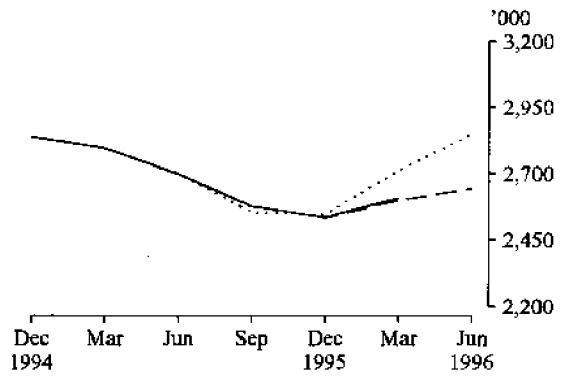
Q3. JEANS
(Average movement 6%)



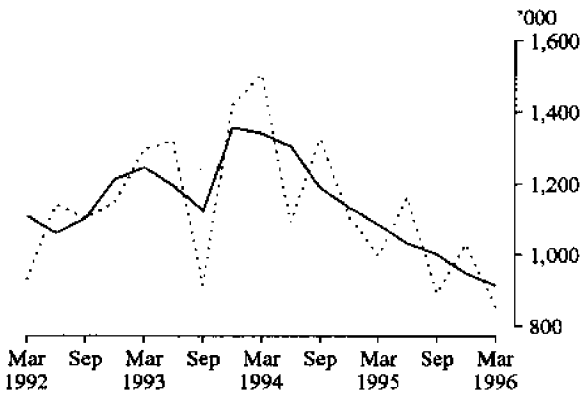
Q4. MEN'S AND BOYS' SHIRTS



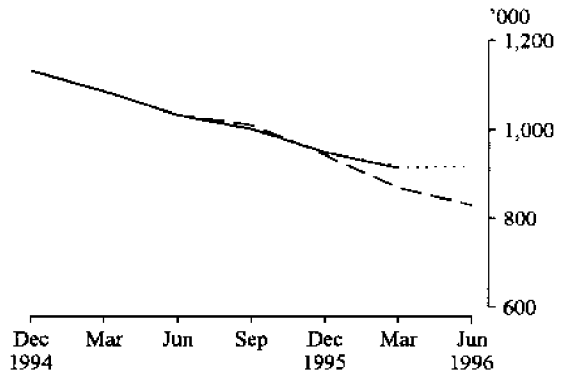
Q4. MEN'S AND BOYS' SHIRTS
(Average movement 7%)



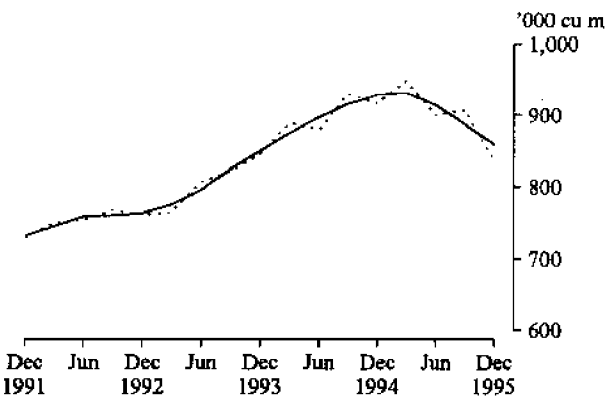
Q5. WOMEN'S SHIRTS AND BLOUSES



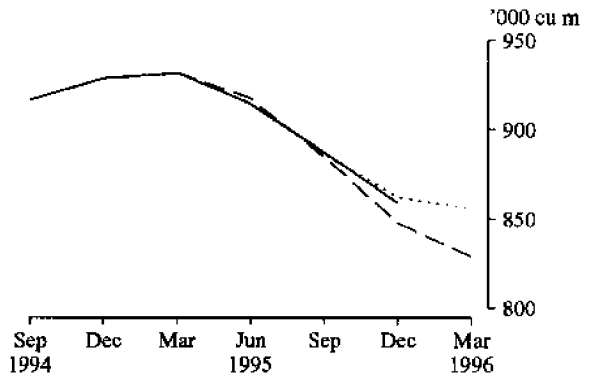
Q5. WOMEN'S SHIRTS AND BLOUSES
(Average movement 11%)



Q6. UNDRESSED SAWN TIMBER(e)



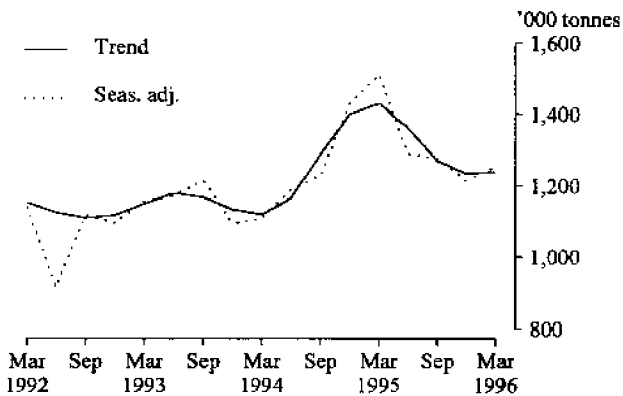
Q6. UNDRESSED SAWN TIMBER(e)
(Average movement 3%)



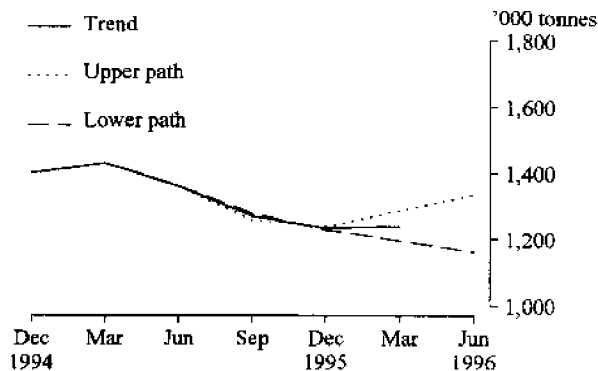
For footnotes see end of tables.

QUARTERLY GRAPHS

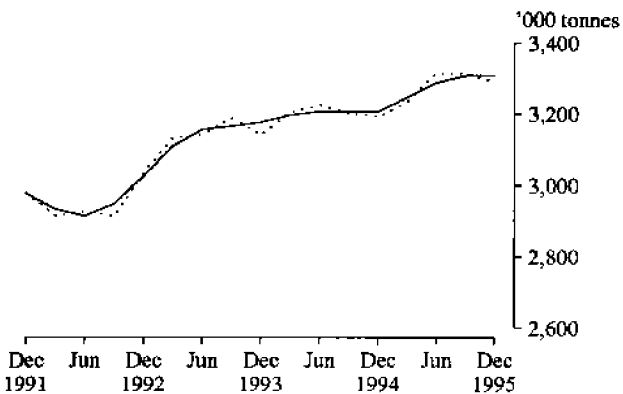
Q7. HARDWOOD WOODCHIPS



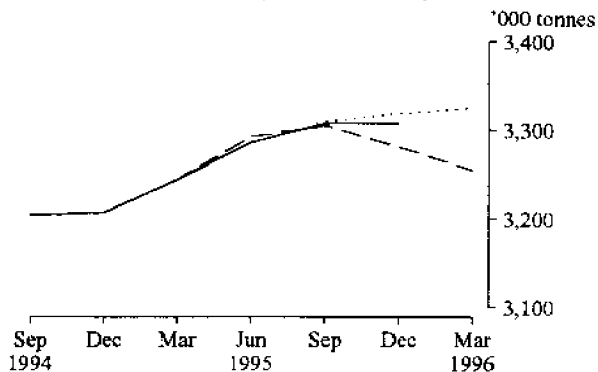
Q7. HARDWOOD WOODCHIPS
(Average movement 7%)



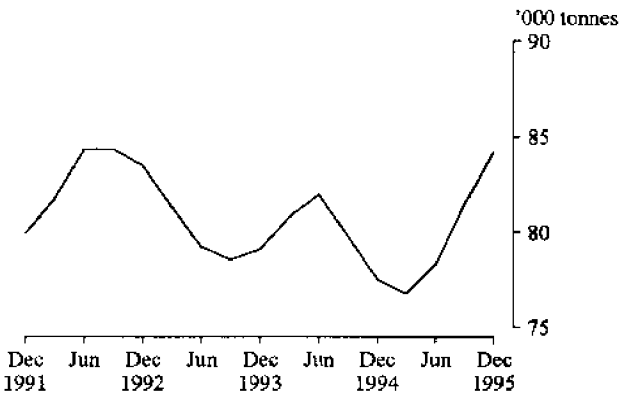
Q8. ALUMINA(e)



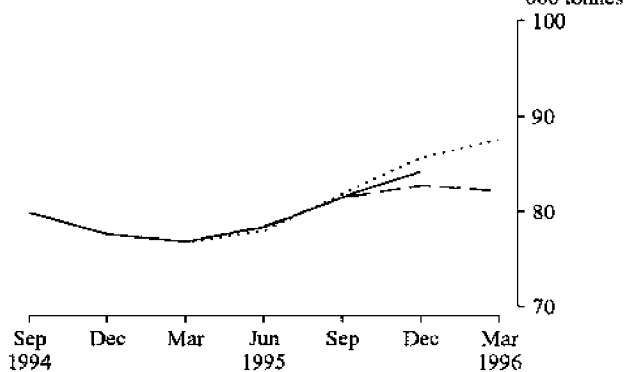
Q8. ALUMINA(e)
(Average movement 2%)



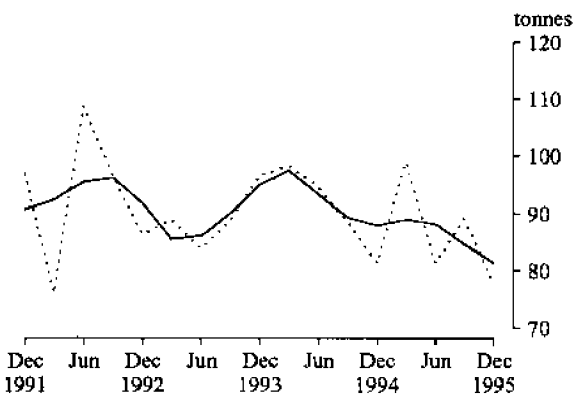
Q9. ZINC(e)



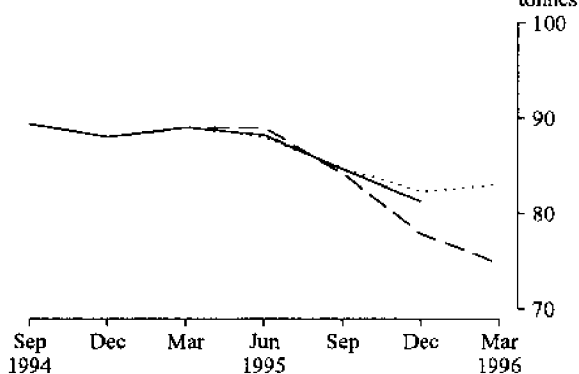
Q9. ZINC(e)
(Average movement 6%)



Q10. SILVER(e)



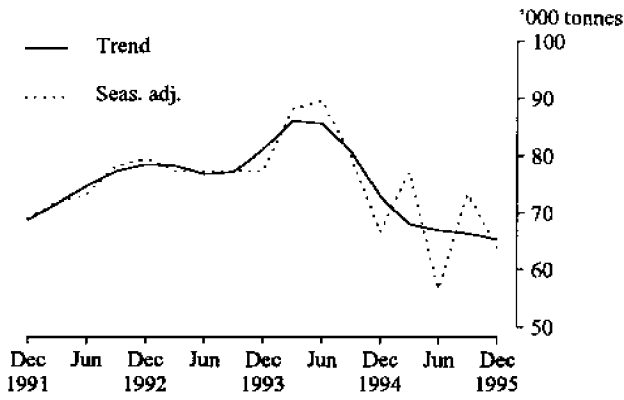
Q10. SILVER(e)
(Average movement 10%)



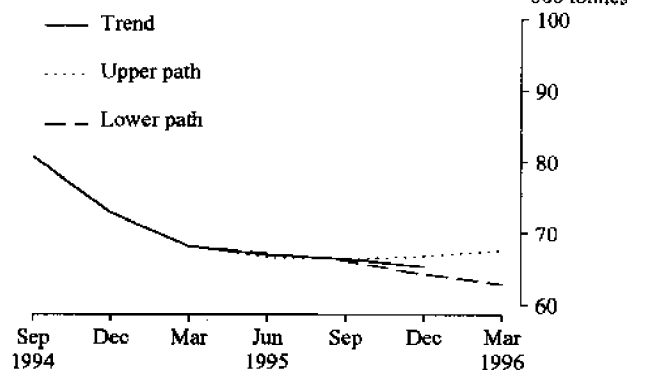
For footnotes see end of tables.

QUARTERLY GRAPHS

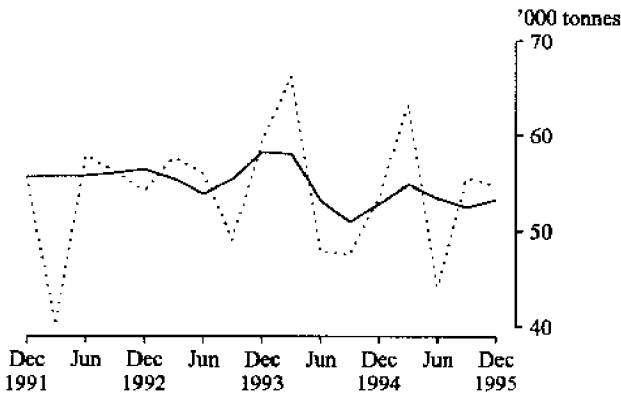
Q11. COPPER(e)



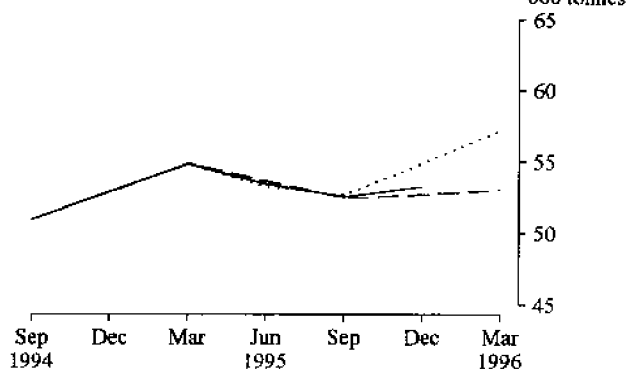
Q11. COPPER(e)
(Average movement 7%)



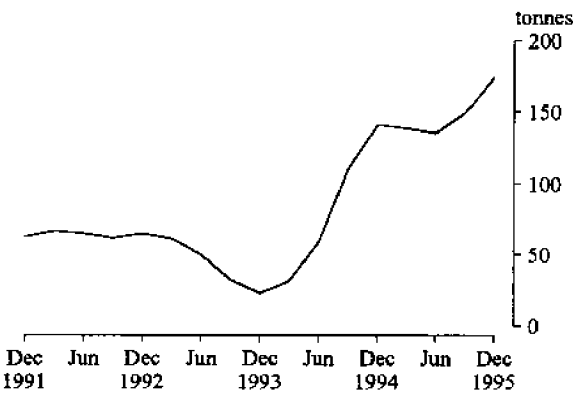
Q12. LEAD(e)



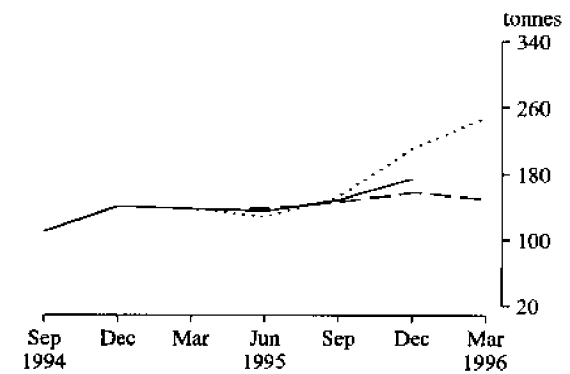
Q12. LEAD(e)
(Average movement 7%)



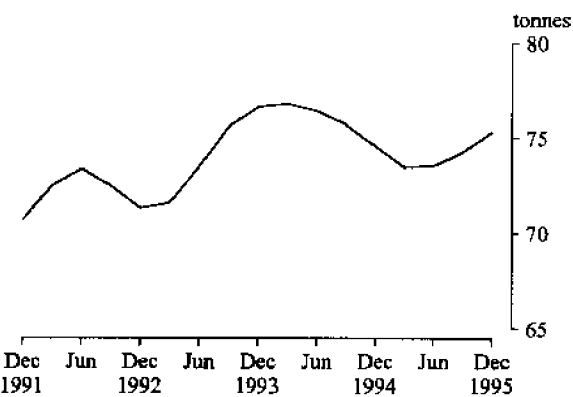
Q13. TIN(e)



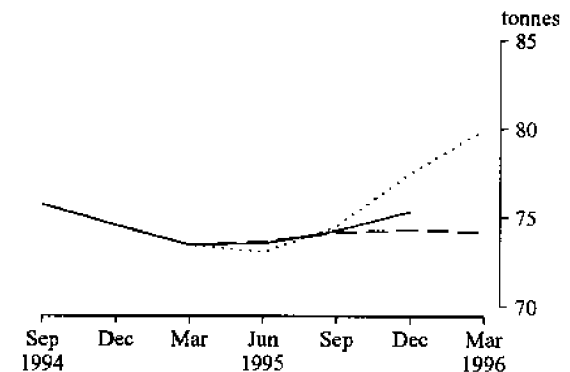
Q13. TIN(e)
(Average movement 47%)



Q14. GOLD(e)



Q14. GOLD(e)
(Average movement 7%)



For footnotes see end of tables.

TABLE 1. PRODUCTION STATISTICS, AUSTRALIA, APRIL 1996

| No. | Item | Series (a) | Unit | 1995 | | | | | 1996 | | | | Percentage changes between latest month shown and— | |
|-----|--------------------------------------|---------------|-------------|--------|--------|--------|--------|--------|----------|----------|--------|--------|---|--------------------------------|
| | | | | Aug. | Sept. | Oct. | Nov. | Dec. | Jan. | Feb. | Mar. | Apr. | prev. month | same month prev. year |
| M1 | Red meat | Orig. | '000 tonnes | 228 | 226 | 219 | 239 | 194 | 198 | 223 | 227 | n.y.a. | 1.7 | -5.7 |
| | | S. adj. | " | 220 | 218 | 211 | 214 | 212 | 224 | 229 | 224 | n.y.a. | -1.9 | 2.4 |
| | | Trend | " | 217 | 215 | 215 | 216 | 218 | 220 | 223 | 225 | n.y.a. | 1.2 | 2.6 |
| M2 | Chicken meat | Orig. | tonnes | 36,781 | 39,429 | 37,197 | 38,014 | 42,190 | 39,471 | 38,123 | 41,328 | n.y.a. | 8.4 | -2.5 |
| | | S. adj. | " | 38,156 | 43,481 | 36,044 | 38,513 | 40,987 | 38,015 | 37,930 | 43,091 | n.y.a. | 13.6 | 2.7 |
| | | Trend | " | 38,660 | 39,036 | 39,160 | 39,081 | 39,098 | 39,336 | 39,744 | 40,097 | n.y.a. | 0.9 | 3.4 |
| M3 | Cheese(b) | Orig. r | " | 17,278 | 27,201 | 31,045 | 30,210 | 28,960 | 24,493 | 23,015 | n.y.a. | n.y.a. | -6.0 | 23.1 |
| | | S. adj. r | " | 21,946 | 21,369 | 20,702 | 21,778 | 22,011 | 19,549 | 23,167 | n.y.a. | n.y.a. | 18.5 | 21.2 |
| | | Trend r | " | 21,843 | 21,516 | 21,281 | 21,276 | 21,374 | 21,525 | 21,628 | n.y.a. | n.y.a. | 0.5 | 12.9 |
| M4 | Butter(b) | Orig. | " | 6,692 | 10,413 | 18,689 | 19,753 | 18,846 | r 16,075 | 11,788 | n.y.a. | n.y.a. | -26.7 | 11.9 |
| | | S. adj. | " | 10,901 | 8,916 | 11,972 | 11,677 | 11,817 | r 12,387 | 11,904 | n.y.a. | n.y.a. | -3.9 | 12.0 |
| | | Trend | " | 11,772 | 11,511 | 11,344 | 11,410 | 11,655 | 11,905 | 12,293 | n.y.a. | n.y.a. | 3.3 | 16.7 |
| M5 | Flour of wheat or of meslin | Orig. | '000 tonnes | 119 | 120 | 110 | 123 | 119 | 104 | 119 | 124 | 111 | -9.9 | 13.7 |
| | | S. adj. | " | 111 | 115 | 112 | 117 | 129 | 114 | 119 | 121 | 122 | 0.7 | 13.3 |
| | | Trend | " | 113 | 115 | 116 | 118 | 119 | 120 | 120 | 121 | 121 | 0.4 | 10.9 |
| M6 | Prepared foods from cereals | Orig. | tonnes | 8,371 | 9,029 | 9,024 | 9,661 | 6,594 | 8,371 | 8,570 | 10,431 | 7,277 | -30.2 | -15.1 |
| | | S. adj. | " | 8,672 | 8,862 | 8,831 | 9,666 | 6,812 | 10,065 | 8,758 | 9,717 | 7,658 | -21.2 | 19.4 |
| | | Trend | " | 8,181 | 8,331 | 8,576 | 8,799 | 8,909 | 8,894 | 8,854 | 8,798 | 8,707 | -1.0 | 0.9 |
| M7 | Biscuits | Orig. | " | 12,503 | 13,263 | 11,856 | 13,131 | 10,044 | 6,384 | 10,616 | 12,125 | 9,138 | -24.6 | 4.0 |
| | | S. adj. | " | 10,891 | 12,400 | 11,362 | 11,273 | 12,289 | 9,593 | 10,216 | 11,650 | 10,474 | -10.1 | 0.9 |
| | | Trend | " | 11,410 | 11,537 | 11,518 | 11,372 | 11,152 | 10,920 | 10,748 | 10,628 | 10,614 | -0.1 | -1.0 |
| M8 | Chocolate based confectionery | Orig. | " | 11,095 | 9,706 | 10,763 | 11,310 | 9,440 | 7,498 | 9,166 | 9,070 | 6,385 | -29.6 | -1.7 |
| | | S. adj. | " | 9,126 | 9,300 | 10,074 | 10,146 | 9,931 | 12,749 | 8,845 | 8,591 | 7,428 | -13.5 | -4.7 |
| | | Trend | " | 9,536 | 9,846 | 10,151 | 10,343 | 10,352 | 10,125 | 9,662 | 9,078 | 8,451 | -6.9 | -2.6 |
| M9 | Other confectionery | Orig. | " | 7,076 | 6,742 | 7,587 | 7,436 | 5,001 | 3,564 | 5,709 | 6,518 | 4,418 | -32.2 | -2.6 |
| | | S. adj. | " | 5,873 | 5,935 | 7,061 | 6,279 | 5,287 | 6,233 | 5,912 | 6,402 | 5,486 | -14.3 | -4.9 |
| | | Trend | " | 6,074 | 6,135 | 6,165 | 6,159 | 6,114 | 6,034 | 5,958 | 5,897 | 5,809 | -1.5 | -0.1 |
| M10 | Malt | Orig. | " | 48,402 | 44,529 | 44,705 | 51,787 | 45,016 | 42,853 | 49,747 | 45,992 | 46,119 | 0.3 | 2.0 |
| | | S. adj. | " | 48,790 | 44,705 | 46,452 | 48,753 | 44,705 | 44,509 | 48,199 | 43,874 | 51,363 | 17.1 | 5.2 |
| | | Trend | " | 46,652 | 46,678 | 46,472 | 46,256 | 46,064 | 46,155 | 46,527 | 47,113 | 47,648 | 1.1 | 4.2 |
| M11 | Beer | Orig. | mil litres | 153 | 144 | 166 | 193 | 161 | 133 | 128 | 147 | 131 | -11.1 | 3.0 |
| | | S. adj. | " | 154 | 158 | 148 | 156 | 138 | 133 | 132 | 150 | 137 | -8.7 | -6.3 |
| | | Trend | " | 152 | 151 | 150 | 147 | 143 | 140 | 138 | 138 | 138 | 0.1 | -6.2 |
| M12 | Tobacco and cigarettes(c) | Orig. | tonnes | 2,070 | 1,910 | 1,421 | 1,671 | 1,647 | 667 | 1,751 | 1,857 | 1,629 | -12.3 | 21.1 |
| | | S. adj. | " | 1,824 | 1,937 | 1,528 | 1,506 | 1,882 | 1,107 | 1,532 | 1,819 | 1,948 | 7.1 | 12.3 |
| | | Trend | " | 1,813 | 1,764 | 1,676 | 1,592 | 1,546 | 1,552 | 1,599 | 1,669 | 1,764 | 5.7 | 1.4 |
| M13 | Man-made fibre woven fabric(d) | Orig. | '000 sq m | 16,863 | 13,530 | 12,795 | 14,778 | 9,663 | 7,955 | r 13,007 | 12,196 | 9,327 | -23.5 | -22.9 |
| | | S. adj. | " | 15,811 | 12,987 | 12,105 | 13,933 | 11,183 | 12,742 | r 12,227 | 11,135 | 9,919 | -10.9 | -25.9 |
| | | Trend | " | 13,766 | 13,528 | 13,214 | 12,825 | 12,432 | 12,042 | 11,644 | 11,245 | 10,831 | -3.7 | -26.5 |
| M14 | Cotton woven fabric(d) | Orig. | " | 5,256 | 7,000 | 5,645 | 6,892 | 4,411 | 3,325 | 5,756 | 4,771 | 4,339 | -9.0 | 19.2 |
| | | S. adj. | " | 4,728 | 6,076 | 5,513 | 6,713 | 5,108 | 8,334 | 5,431 | 4,063 | 4,574 | 12.6 | 20.7 |
| | | Trend | " | 5,061 | 5,524 | 5,969 | 6,232 | 6,246 | 6,029 | 5,671 | 5,244 | 4,849 | -7.5 | 13.4 |

For footnotes see end of tables.

TABLE 1. PRODUCTION STATISTICS, AUSTRALIA, APRIL 1996 —continued

| No. | Item | Series (a) | Unit | 1995 | | | | | 1996 | | | | Percentage changes between latest month shown and— | |
|-----|---------------------------------|------------|-------------|--------|--------|--------|---------|--------|--------|--------|---------|--------|--|-----------------------|
| | | | | Aug. | Sept. | Oct. | Nov. | Dec. | Jan. | Feb. | Mar. | Apr. | prev. month | same month prev. year |
| M15 | Cotton yarn | Orig. | tonnes | 3,831 | 3,201 | 3,077 | 3,552 | 2,318 | 1,901 | 3,282 | r 3,381 | 2,509 | -25.8 | -9.5 |
| | | S. adj. | " | 3,463 | 2,885 | 3,084 | 3,390 | 2,726 | 3,014 | 3,368 | r 3,035 | 2,762 | -9.0 | -12.1 |
| | | Trend | " | 3,158 | 3,124 | 3,103 | 3,092 | 3,081 | 3,065 | 3,045 | 3,020 | 2,970 | -1.7 | -8.5 |
| M16 | Wool yarn | Orig. | " | 2,117 | 1,957 | 1,914 | 1,444 | 1,301 | 1,236 | 1,798 | r 1,685 | 1,445 | -14.2 | -3.2 |
| | | S. adj. | " | 1,778 | 1,857 | 1,651 | 1,306 | 1,637 | 1,824 | 1,733 | r 1,799 | 1,628 | -9.5 | -8.8 |
| | | Trend | " | 1,788 | 1,723 | 1,662 | 1,629 | 1,635 | 1,668 | 1,704 | 1,728 | 1,754 | 1.5 | -5.2 |
| M17 | Wool woven fabric | Orig. | '000 sq m | 738 | 586 | 639 | 645 | 526 | 364 | 702 | 608 | 463 | -23.8 | -33.8 |
| | | S. adj. | " | 660 | 604 | 585 | 559 | 653 | 541 | 623 | 560 | 477 | -14.9 | -37.5 |
| | | Trend | " | 626 | 601 | 593 | 594 | 593 | 583 | 570 | 554 | 537 | -3.1 | -27.6 |
| M18 | Textile floor coverings | Orig. | " | 3,972 | 3,656 | 4,057 | 3,192 | 3,046 | 2,483 | 4,057 | 3,855 | 3,456 | -10.3 | 13.7 |
| | | S. adj. | " | 3,448 | 3,345 | 3,732 | 2,724 | 3,536 | 4,132 | 3,841 | 3,845 | 3,850 | 0.1 | 8.8 |
| | | Trend | " | 3,536 | 3,464 | 3,420 | 3,443 | 3,541 | 3,681 | 3,803 | 3,895 | 3,952 | 1.5 | 4.2 |
| M19 | Footwear excl'g sports footwear | Orig. | '000 pairs | 1,497 | 1,445 | 1,446 | 1,358 | 1,006 | 749 | 1,307 | 1,322 | 1,170 | -11.5 | 12.5 |
| | | S. adj. | " | 1,366 | 1,388 | 1,340 | 1,258 | 1,181 | 1,342 | 1,222 | 1,169 | 1,152 | -1.5 | 8.4 |
| | | Trend | " | 1,304 | 1,326 | 1,325 | 1,302 | 1,272 | 1,242 | 1,217 | 1,193 | 1,175 | -1.5 | 2.1 |
| M20 | Sports footwear | Orig. | " | 24 | 24 | 17 | 24 | 23 | 7 | 18 | 17 | 13 | -18.9 | -44.2 |
| | | S. adj. | " | 19 | 21 | 18 | 20 | 33 | 16 | 16 | 14 | 13 | -12.7 | -47.2 |
| | | Trend | " | 22 | 22 | 22 | 22 | 21 | 20 | 18 | 15 | 14 | -12.0 | -44.5 |
| M21 | Newsprint | Orig. | tonnes | 39,758 | 33,033 | 36,142 | 38,931 | 36,733 | 38,631 | 40,350 | 36,111 | 34,818 | -3.6 | -6.4 |
| | | S. adj. | " | 40,664 | 34,990 | 35,720 | 38,623 | 37,718 | 36,617 | 39,909 | 35,231 | 32,797 | -6.9 | -9.8 |
| | | Trend | " | 37,407 | 37,224 | 37,126 | 37,131 | 37,256 | 37,307 | 36,821 | 36,178 | 35,301 | -2.4 | -7.1 |
| M22 | Wood pulp | Orig. | " | 85,922 | 89,979 | 75,865 | 78,435 | 92,434 | 80,019 | 83,003 | 78,760 | 76,641 | -2.7 | -10.4 |
| | | S. adj. | " | 85,410 | 86,705 | 80,534 | 75,844 | 92,730 | 78,802 | 82,764 | 76,705 | 78,718 | 2.6 | -11.1 |
| | | Trend | " | 83,894 | 83,078 | 82,821 | 82,754 | 82,534 | 81,809 | 80,877 | 79,875 | 79,173 | -0.9 | -11.9 |
| M23 | Unfaminated particle board | Orig. | '000 cu m | 74 | 72 | 69 | 79 | 57 | 36 | 73 | 74 | 68 | -7.8 | 3.6 |
| | | S. adj. | " | 60 | 69 | 64 | 63 | 75 | 59 | 73 | 73 | 74 | 0.2 | 1.3 |
| | | Trend | " | 66 | 65 | 65 | 66 | 67 | 69 | 70 | 72 | 73 | 2.2 | 0.7 |
| M25 | Paperboard containers | Orig. | '000 tonnes | 99,527 | 93,981 | 99,183 | 106,020 | 82,812 | 86,684 | 90,542 | 91,738 | 84,015 | -8.4 | 18.5 |
| | | S. adj. | " | n.a. | n.a. | n.a. | n.a. | n.a. | n.a. | n.a. | n.a. | n.a. | n.a. | n.a. |
| | | Trend | " | n.a. | n.a. | n.a. | n.a. | n.a. | n.a. | n.a. | n.a. | n.a. | n.a. | n.a. |
| M26 | Automotive gasoline(e) | Orig. | megalitres | 1,446 | 1,453 | 1,528 | 1,487 | 1,537 | 1,561 | 1,463 | n.y.a. | n.y.a. | -6.3 | 2.5 |
| | | S. adj. | " | 1,389 | 1,472 | 1,560 | 1,617 | 1,517 | 1,476 | 1,537 | n.y.a. | n.y.a. | 4.1 | 2.3 |
| | | Trend | " | 1,493 | 1,507 | 1,522 | 1,532 | 1,535 | 1,533 | 1,538 | n.y.a. | n.y.a. | 0.3 | 3.2 |
| M27 | Fuel oil(e) | Orig. | " | 178 | 232 | 156 | 164 | 209 | 129 | 139 | n.y.a. | n.y.a. | 7.7 | -23.9 |
| | | S. adj. | " | n.a. | n.a. | n.a. | n.a. | n.a. | n.a. | n.a. | n.a. | n.a. | n.a. | n.a. |
| | | Trend | " | 200 | 193 | 187 | 179 | 171 | 162 | 156 | n.y.a. | n.y.a. | -3.7 | -27.2 |
| M28 | Aviation turbine fuel(e) | Orig. | " | 417 | 403 | 400 | 430 | 463 | 452 | 398 | n.y.a. | n.y.a. | -12.0 | 10.8 |
| | | S. adj. | " | 391 | 411 | 355 | 420 | 447 | 431 | 391 | n.y.a. | n.y.a. | -9.4 | 3.5 |
| | | Trend | " | 391 | 395 | 402 | 409 | 415 | 419 | 421 | n.y.a. | n.y.a. | 0.3 | 13.8 |
| M29 | Automotive diesel oil(e) | Orig. | " | 977 | 946 | 956 | 1,011 | 1,119 | 1,049 | 980 | n.y.a. | n.y.a. | -6.5 | 9.7 |
| | | S. adj. | " | 972 | 967 | 930 | 1,027 | 1,038 | 1,002 | 1,038 | n.y.a. | n.y.a. | 3.6 | 9.8 |
| | | Trend | " | 984 | 983 | 987 | 996 | 1,007 | 1,019 | 1,033 | n.y.a. | n.y.a. | 1.3 | 10.9 |

For footnotes see end of tables.

TABLE 1. PRODUCTION STATISTICS, AUSTRALIA, APRIL 1996 —continued

| No. | Item | Series (a) | Unit | 1995 | | | | | 1996 | | | | Percentage changes between latest month shown and— | |
|-----|---|---------------|-------------|--------|--------|--------|--------|--------|--------|--------|----------|--------|---|--------------------------------|
| | | | | Aug. | Sept. | Oct. | Nov. | Dec. | Jan. | Feb. | Mar. | Apr. | prev. month | same month prev. year |
| M30 | Plastics in primary forms | Orig. | '000 tonnes | 110 | 104 | 108 | 96 | 85 | 98 | 102 | 108 | 100 | -7.3 | 1.1 |
| | | S. adj. | " | 104 | 101 | 97 | 93 | 95 | 103 | 106 | 108 | 100 | -7.1 | -6.0 |
| | | Trend | " | 104 | 101 | 99 | 98 | 99 | 101 | 102 | 104 | 105 | 1.1 | -0.7 |
| M31 | Rigid PVC tubes, pipes and hoses | Orig. | tonnes | 7,520 | 6,612 | 7,058 | 7,649 | 5,588 | 4,479 | 8,753 | 9,229 | 7,599 | -17.7 | 36.6 |
| | | S. adj. | " | 6,868 | 7,029 | 7,076 | 6,774 | 6,127 | 7,506 | 7,859 | 9,178 | 9,511 | 3.6 | 31.2 |
| | | Trend | " | 7,078 | 6,825 | 6,674 | 6,737 | 7,045 | 7,485 | 8,014 | 8,569 | 9,092 | 6.1 | 14.1 |
| M32 | Polyethylene bottles up to two litres | Orig. | million | 112 | 123 | 125 | 121 | 147 | 119 | 129 | 140 | 109 | -22.1 | 13.8 |
| | | S. adj. | " | n.a. | n.a. | n.a. | n.a. | n.a. | n.a. | n.a. | n.a. | n.a. | n.a. | n.a. |
| | | Trend | " | n.a. | n.a. | n.a. | n.a. | n.a. | n.a. | n.a. | n.a. | n.a. | n.a. | n.a. |
| M33 | Paint | Orig. | '000 litres | 14,345 | 16,001 | 14,385 | 14,914 | 15,103 | 13,006 | 16,714 | r 17,602 | 13,947 | -20.8 | -2.6 |
| | | S. adj. | " | 15,090 | 14,585 | 13,459 | 14,002 | 14,753 | 16,357 | 17,051 | r 16,298 | 14,671 | -10.0 | -7.8 |
| | | Trend | " | 15,000 | 14,526 | 14,357 | 14,574 | 15,072 | 15,576 | 15,919 | 16,100 | 16,179 | 0.5 | -0.7 |
| M34 | Superphosphates | Orig. | '000 tonnes | 66 | 89 | 166 | 183 | 162 | 208 | 171 | 161 | 156 | -3.4 | -2.8 |
| | | S. adj. | " | 109 | 172 | 243 | 159 | 135 | 163 | 117 | 105 | 129 | 22.9 | -3.9 |
| | | Trend | " | 144 | 160 | 171 | 171 | 161 | 145 | 131 | 119 | 109 | -8.1 | -10.2 |
| M35 | Portland cement | Orig. | " | 586 | 578 | 554 | 508 | 483 | 414 | 533 | 579 | 491 | -15.1 | -8.7 |
| | | S. adj. | " | 537 | 588 | 532 | 441 | 503 | 562 | 557 | 572 | 526 | -8.0 | -9.1 |
| | | Trend | " | 541 | 530 | 521 | 518 | 521 | 530 | 540 | 549 | 558 | 1.7 | -3.8 |
| M36 | Clay bricks | Orig. | million | 141 | 135 | 138 | 127 | 104 | 79 | 108 | r 123 | 116 | 5.4 | -14.4 |
| | | S. adj. | " | 126 | 132 | 131 | 122 | 117 | 113 | 108 | r 118 | 119 | 1.6 | -20.7 |
| | | Trend | " | 135 | 130 | 126 | 121 | 118 | 116 | 114 | 114 | 114 | 0.3 | -24.4 |
| M37 | Ready mixed concrete | Orig. | '000 cu m | 1,386 | 1,289 | 1,285 | 1,254 | 1,011 | 952 | 1,236 | 1,287 | 1,103 | -14.3 | -2.6 |
| | | S. adj. | " | 1,265 | 1,265 | 1,205 | 1,143 | 1,155 | 1,195 | 1,257 | 1,262 | 1,179 | -6.6 | -7.6 |
| | | Trend | " | 1,244 | 1,228 | 1,209 | 1,194 | 1,191 | 1,198 | 1,210 | 1,219 | 1,229 | 0.8 | -2.9 |
| M38 | Basic iron, spiegeleisen & sponge iron(f) | Orig. | '000 tonnes | 657 | 629 | 640 | 633 | 639 | 630 | 611 | 636 | 614 | -3.4 | 1.5 |
| | | S. adj. | " | 638 | 606 | 604 | 621 | 652 | 630 | 668 | 648 | 625 | -3.5 | 0.1 |
| | | Trend | " | 610 | 613 | 619 | 627 | 635 | 641 | 645 | 647 | 646 | -0.1 | 3.0 |
| M39 | Blooms and slabs of iron or steel(f) | Orig. | " | 693 | 677 | 690 | 669 | 664 | 657 | 618 | 670 | 642 | -4.0 | 0.7 |
| | | S. adj. | " | 670 | 640 | 652 | 660 | 664 | 643 | 676 | 684 | 669 | -2.1 | 0.5 |
| | | Trend | " | 652 | 652 | 653 | 656 | 659 | 663 | 668 | 672 | 675 | 0.4 | 3.1 |
| M40 | Insulated wire | Orig. | tonnes | 6,653 | 6,832 | 6,496 | 6,949 | 4,529 | 3,612 | 6,663 | 6,549 | 5,457 | -16.7 | 3.8 |
| | | S. adj. | " | 6,440 | 6,260 | 5,701 | 6,448 | 5,382 | 6,367 | 6,699 | 5,836 | 5,545 | -5.0 | 3.9 |
| | | Trend | " | 6,126 | 6,097 | 6,073 | 6,075 | 6,096 | 6,093 | 6,069 | 6,018 | 5,959 | -1.0 | -5.5 |
| M41 | Cars and station wagons | Orig. | number | 31,101 | 26,800 | 24,523 | 27,826 | 20,843 | 13,172 | 26,787 | 26,050 | 22,629 | -13.1 | 38.8 |
| | | S. adj. | " | 26,078 | 25,113 | 22,429 | 23,881 | 27,203 | 27,464 | 25,308 | 24,487 | 26,139 | 6.7 | 31.7 |
| | | Trend | " | 25,285 | 25,116 | 24,960 | 25,030 | 25,377 | 25,710 | 25,891 | 25,944 | 25,996 | 0.2 | 10.9 |
| M42 | Vehicles for goods and materials | Orig. | " | 2,498 | 2,049 | 1,999 | 2,159 | 1,476 | 1,003 | 2,134 | 2,430 | 2,168 | -10.8 | 44.2 |
| | | S. adj. | " | 2,116 | 1,992 | 1,691 | 1,930 | 1,937 | 2,134 | 2,106 | 2,279 | 2,369 | 3.9 | 35.9 |
| | | Trend | " | 2,048 | 1,985 | 1,928 | 1,914 | 1,967 | 2,057 | 2,153 | 2,242 | 2,328 | 3.8 | 4.3 |

For footnotes see end of tables.

TABLE 1. PRODUCTION STATISTICS, AUSTRALIA, APRIL 1996 —continued

| No. | Item | Series (a) | Unit | 1995 | | | | | 1996 | | | | Percentage changes between latest month shown and— | |
|-----|---|---------------|------------|--------|--------|--------|--------|--------|--------|--------|--------|--------|---|--------------------------------|
| | | | | Aug. | Sept. | Oct. | Nov. | Dec. | Jan. | Feb. | Mar. | Apr. | prev. month | same month prev. year |
| M43 | Telephones | Orig. | '000 | 109 | 135 | 193 | 144 | 124 | 72 | 66 | 91 | 79 | -12.4 | -2.6 |
| | | S. adj. | " | n.a. | n.a. | n.a. | n.a. | n.a. | n.a. | n.a. | n.a. | n.a. | n.a. | n.a. |
| | | Trend | " | n.a. | n.a. | n.a. | n.a. | n.a. | n.a. | n.a. | n.a. | n.a. | n.a. | n.a. |
| M44 | Domestic refrigerators | Orig. | number | 36,404 | 36,317 | 39,325 | 42,831 | 34,485 | 38,183 | 37,107 | 33,988 | 20,441 | -39.9 | -12.9 |
| | | S. adj. | " | 36,215 | 41,454 | 35,117 | 34,715 | 38,792 | 36,748 | 33,655 | 31,144 | 23,141 | -25.7 | -19.3 |
| | | Trend | " | 37,361 | 37,756 | 37,815 | 37,359 | 36,390 | 34,835 | 32,834 | 30,549 | 28,577 | -6.5 | -13.9 |
| M45 | Water heaters | Orig. | " | 57,447 | 56,440 | 54,924 | 59,653 | 40,651 | 21,528 | 44,569 | 50,738 | 38,653 | -23.8 | 1.7 |
| | | S. adj. | " | 49,093 | 51,712 | 48,736 | 56,298 | 45,587 | 43,058 | 43,962 | 45,924 | 47,041 | 2.4 | -11.6 |
| | | Trend | " | 52,111 | 51,296 | 50,276 | 49,062 | 47,715 | 46,423 | 45,463 | 44,874 | 44,707 | -0.4 | -20.5 |
| M46 | Domestic clothes washing machines | Orig. | " | 36,352 | 31,625 | 27,083 | 29,485 | 20,873 | 10,757 | 23,619 | 20,595 | 15,306 | -25.7 | -24.0 |
| | | S. adj. | " | 27,875 | 28,208 | 26,524 | 26,228 | 25,602 | 20,204 | 23,677 | 19,384 | 16,858 | -13.0 | -26.4 |
| | | Trend | " | 27,106 | 27,285 | 26,912 | 25,932 | 24,511 | 22,886 | 21,280 | 19,769 | 18,487 | -6.5 | -24.1 |
| M47 | Electric motors | Orig. | '000 | 284 | 255 | 225 | 280 | 253 | 158 | 282 | 204 | 185 | -9.5 | -10.6 |
| | | S. adj. | " | 275 | 229 | 203 | 254 | 301 | 235 | 267 | 188 | 201 | 6.9 | -17.6 |
| | | Trend | " | 248 | 247 | 248 | 251 | 251 | 247 | 238 | 227 | 214 | 5.4 | -17.0 |
| M48 | Electricity | Orig. | mil k Wh | 14,655 | 13,746 | 13,717 | 13,315 | 13,420 | 13,679 | 13,354 | 14,043 | 13,342 | -5.0 | 2.4 |
| | | S. adj. | " | 13,536 | 13,866 | 13,920 | 13,765 | 13,781 | 14,001 | 13,941 | 14,164 | 14,221 | 0.4 | 2.0 |
| | | Trend | " | 13,887 | 13,849 | 13,821 | 13,826 | 13,868 | 13,941 | 14,016 | 14,086 | 14,155 | 0.5 | 2.0 |
| M49 | Gas | Orig. | terajoules | 60,054 | 54,069 | 53,882 | 47,053 | 43,940 | 42,024 | 43,968 | 47,210 | 48,913 | 3.6 | -0.2 |
| | | S. adj. | " | 48,366 | 49,331 | 53,646 | 50,402 | 52,709 | 52,246 | 52,756 | 52,724 | 54,226 | 2.8 | -0.5 |
| | | Trend | " | 51,186 | 51,005 | 51,131 | 51,507 | 51,978 | 52,466 | 52,848 | 53,172 | 53,357 | 0.3 | 0.8 |

For footnotes see end of tables.

TABLE 2. PRODUCTION STATISTICS, AUSTRALIA, MARCH QUARTER 1996

| No. | Item | Series (a) | Unit | 1994 | | | | 1995 | | | | 1996 | | Percentage changes between latest quarter shown and- | |
|-----|----------------------------------|---------------|-------------|-------|-------|-------|-------|-------|---------|---------|---------|--------|----------------------------------|---|---------------|
| | | | | Mar. | June | Sept. | Dec. | Mar. | June | Sept. | Dec. | Mar. | same quarter prev. year | prev. quarter | prev. year |
| | | | | | | | | | | | | | | | |
| Q1 | Men's and boys' long trousers | Orig. r | '000 | 759 | 1,048 | 1,039 | 987 | 822 | 944 | 1,013 | 756 | 788 | 4.1 | -4.2 | |
| | | S. adj. r | " | 881 | 927 | 1,012 | 1,005 | 956 | 835 | 986 | 770 | 916 | 18.9 | -4.2 | |
| | | Trend r | " | 898 | 939 | 991 | 986 | 952 | 906 | 880 | 870 | 872 | 0.2 | -8.5 | |
| Q2 | Women's and girls' long trousers | Orig. | " | 461 | 188 | 407 | 380 | 628 | 443 | 252 | 202 | 359 | 77.6 | -42.8 | |
| | | S. adj. | " | 403 | 187 | 405 | 450 | 545 | 442 | 252 | 240 | 310 | 29.3 | -43.0 | |
| | | Trend | " | 314 | 334 | 397 | 476 | 493 | 415 | 310 | 259 | 275 | 5.9 | -44.3 | |
| Q3 | Jeans | Orig. | " | 709 | 945 | 941 | 770 | 641 | 887 | 979 | 764 | 706 | -7.6 | 10.1 | |
| | | S. adj. | " | 852 | 864 | 837 | 810 | 772 | 811 | 870 | 803 | 851 | 5.9 | 10.2 | |
| | | Trend | " | 879 | 852 | 830 | 804 | 797 | 812 | 831 | 838 | 838 | 0.0 | 5.2 | |
| Q4 | Men's and boys' shirts | Orig. | " | 2,623 | 2,867 | 3,545 | 2,900 | 2,347 | r 2,554 | r 2,841 | r 2,741 | 2,231 | -18.6 | -5.0 | |
| | | S. adj. | " | 3,280 | 3,208 | 2,940 | 2,642 | 2,916 | r 2,861 | r 2,357 | r 2,502 | 2,761 | 10.4 | -5.3 | |
| | | Trend | " | 3,157 | 3,127 | 2,954 | 2,835 | 2,795 | 2,696 | 2,575 | 2,536 | 2,606 | 2.8 | -6.8 | |
| Q5 | Women's shirts and blouses | Orig. | " | 1,218 | 812 | 1,787 | 1,218 | 806 | 864 | 1,202 | 1,132 | 690 | -39.0 | -14.4 | |
| | | S. adj. | " | 1,506 | 1,092 | 1,326 | 1,107 | 998 | 1,163 | 891 | 1,029 | 855 | -17.0 | -14.4 | |
| | | Trend | " | 1,341 | 1,304 | 1,189 | 1,131 | 1,084 | 1,032 | 1,001 | 948 | 913 | -3.7 | -15.8 | |
| Q6 | Undressed sawn timber(e) | Orig. | '000 cu m | 827 | 905 | 967 | 916 | 883 | 925 | 946 | 834 | n.y.a. | -11.8 | -9.0 | |
| | | S. adj. | " | 889 | 880 | 929 | 917 | 948 | 900 | 908 | 836 | n.y.a. | -8.0 | -8.8 | |
| | | Trend | " | 875 | 896 | 916 | 928 | 932 | 914 | 887 | 859 | n.y.a. | -3.2 | -7.5 | |
| Q7 | Hardwood woodchips | Orig. | '000 tonnes | 1,026 | 1,228 | 1,286 | 1,417 | 1,402 | 1,332 | 1,334 | 1,203 | 1,163 | -3.3 | -17.1 | |
| | | S. adj. | " | 1,108 | 1,188 | 1,228 | 1,428 | 1,512 | 1,288 | 1,273 | 1,214 | 1,253 | 3.2 | -17.1 | |
| | | Trend | " | 1,118 | 1,164 | 1,289 | 1,400 | 1,428 | 1,359 | 1,267 | 1,231 | 1,238 | 0.5 | -13.3 | |
| Q8 | Alumina(e) | Orig. | " | 3,172 | 3,209 | 3,235 | 3,203 | 3,203 | 3,299 | 3,348 | 3,297 | n.y.a. | -1.5 | 2.9 | |
| | | S. adj. | " | 3,205 | 3,225 | 3,200 | 3,192 | 3,231 | 3,314 | 3,313 | 3,288 | n.y.a. | -0.8 | 3.0 | |
| | | Trend | " | 3,195 | 3,207 | 3,204 | 3,207 | 3,244 | 3,286 | 3,307 | 3,308 | n.y.a. | 0.0 | 3.1 | |
| Q9 | Zinc(e) | Orig. | " | 82 | 81 | 82 | 78 | 72 | 81 | 82 | 85 | n.y.a. | 3.7 | 9.0 | |
| | | S. adj. | " | n.a. | n.a. | n.a. | n.a. | n.a. | n.a. | n.a. | n.a. | n.a. | n.a. | n.a. | |
| | | Trend | " | 81 | 82 | 80 | 78 | 77 | 78 | 81 | 84 | n.y.a. | 3.4 | 8.6 | |
| Q10 | Silver(e) | Orig. | tonnes | 91 | 104 | 88 | 79 | 93 | 89 | 89 | 75 | n.y.a. | -15.7 | -5.1 | |
| | | S. adj. | " | 98 | 95 | 88 | 81 | 99 | 81 | 89 | 78 | n.y.a. | -12.9 | -4.5 | |
| | | Trend | " | 97 | 93 | 89 | 88 | 89 | 88 | 85 | 81 | n.y.a. | -3.9 | -7.6 | |
| Q11 | Copper(e) | Orig. | '000 tonnes | 81 | 87 | 87 | 68 | 71 | 55 | 80 | 65 | n.y.a. | -18.8 | -4.4 | |
| | | S. adj. | " | 88 | 90 | 80 | 67 | 77 | 57 | 73 | 64 | n.y.a. | -12.9 | -4.2 | |
| | | Trend | " | 86 | 86 | 81 | 73 | 68 | 67 | 66 | 65 | n.y.a. | -1.5 | -10.2 | |
| Q12 | Lead(e) | Orig. | " | 55 | 53 | 49 | 55 | 53 | 49 | 57 | 56 | n.y.a. | -1.8 | 1.8 | |
| | | S. adj. | " | 66 | 48 | 48 | 54 | 63 | 44 | 56 | 55 | n.y.a. | -1.6 | 1.9 | |
| | | Trend | " | 58 | 53 | 51 | 53 | 55 | 53 | 53 | 53 | n.y.a. | 1.5 | 0.7 | |
| Q13 | Tin(e) | Orig. | tonnes | 18 | 90 | 75 | 135 | 180 | 65 | 165 | 160 | n.y.a. | -3.0 | 18.5 | |
| | | S. adj. | " | n.a. | n.a. | n.a. | n.a. | n.a. | n.a. | n.a. | n.a. | n.a. | n.a. | n.a. | |
| | | Trend | " | 31 | 59 | 110 | 141 | 138 | 135 | 149 | 174 | n.y.a. | 16.7 | 23.4 | |
| Q14 | Gold(e) | Orig. | " | 75 | 79 | 78 | 71 | 74 | 74 | 75 | 75 | n.y.a. | 0.0 | 5.4 | |
| | | S. adj. | " | n.a. | n.a. | n.a. | n.a. | n.a. | n.a. | n.a. | n.a. | n.a. | n.a. | n.a. | |
| | | Trend | " | 77 | 76 | 76 | 75 | 73 | 74 | 74 | 75 | n.y.a. | 1.4 | 1.0 | |

(a) Trend estimates shown may have been revised. See Explanatory Note 13. (b) Source: Australian Dairy Corporation. (c) Source: Australian Tobacco Marketing Committee, until April 1995. (d) Recent movements in this series have caused some uncertainty in its trend estimates from September 1995. Although these changes may be sustained, a larger span of data is required before the final trend for this series can be determined. (e) Source: Australian Bureau of Agricultural and Resource Economics (ABARE). (f) This data item comprises production of BHP Steel only.

EXPLANATORY NOTES

INTRODUCTION

1 This publication presents monthly and quarterly estimates of production of selected major manufacturing indicators for Australia.

SCOPE AND COVERAGE

2 Data presented in this publication are collected from a number of different sources. The prime source is the ABS surveys of manufacturing production. Data are also obtained from surveys undertaken by the Australian Bureau of Agricultural and Resource Economics (ABARE), the Australian Dairy Corporation (ADC), the Australian Tobacco Marketing Committee (until April 1995) and from ABS agriculture collections. Scope and coverage varies slightly depending on the source of the information.

3 Where production statistics are collected by the ABS manufacturing production surveys, they are not collected from single establishment manufacturing businesses with less than four persons employed nor from establishments predominantly engaged in non-manufacturing activities but which may carry out some manufacturing in a minor way. However, in general, the contribution of these small producers to statistical aggregates is only marginal and data contained in this publication provide reliable information for the evaluation of movements in commodity production.

4 The statistics on meat production include data collected from abattoirs and other major slaughtering establishments and include estimates of animals slaughtered on farms and by country butchers and other small slaughtering establishments for human consumption.

5 The statistics on chicken meat have been collected from commercial poultry slaughtering establishments. Producers in Tasmania, the Northern Territory and the Australian Capital Territory and the very small producers are excluded from the collection.

6 Data on the production of fuels, sawn timber and quarterly estimates of base metal production are obtained from the Australian Bureau of Agricultural and Resource Economics publications *Mineral Statistics* and *Forest Products Statistics*.

7 Data on the production of cheese and butter are obtained from the Australian Dairy Corporation publication *Dairystats*. Data on tobacco and cigarettes produced were obtained from the Australian Tobacco Marketing Committee until April 1995.

COMPARABILITY WITH OTHER ESTIMATES

8 The ABS publishes quarterly estimates of constant price manufacturing production in the publication *Quarterly Indexes of Industrial Production, Australia* (8125.0). These estimates are shown as index numbers and are derived mainly from estimates of manufacturers' sales and stocks.

9 The production statistics collected monthly and quarterly referred to in paragraph 1 account, in total, for less than half of the output of the manufacturing sector. For information on general trends in the manufacturing sector, refer to the publication referred to in paragraph 8.

SEASONALLY ADJUSTED AND
TREND ESTIMATES

10 Seasonally adjusted statistics are shown for most of the data items contained in this publication. In the seasonal adjustment, account has been taken not only of normal seasonal factors, but also where appropriate, of 'working day' effects (arising from the varying numbers of Sundays, Mondays, Tuesdays, etc. in the month) and the influence of Easter and Australia Day which may, in successive years, affect figures for different months. Details of the methods used in seasonally adjusting these series are available on request.

11 Seasonal adjustment procedures do not aim to remove the irregular or non-seasonal influences which may be present in any particular month, such as the effect of strikes, holiday shutdowns or other factors which vary with the prevailing demand for products. Irregular influences that are highly volatile can make it difficult to interpret the movement of the series even after seasonal adjustment.

12 The smoothing of seasonally adjusted series to create trend estimates is a means of reducing the impact of the irregular component of the series. The trend estimates have been derived by applying a 13-term Henderson weighted moving average to the seasonally adjusted series.

13 While this smoothing technique enables estimates of trend to be produced for the latest month, it does result in revisions to the estimates for the most recent months as data for subsequent months become available. Generally, subsequent revisions become smaller and after 3 months have little impact on the series. There will also be revisions as a result of revisions to the original estimates and annual reviews of seasonal and 'working day' factors.

14 Users may wish to refer to the ABS Information Paper *A Guide to Interpreting Time Series - Monitoring 'Trends', an overview* (1348.0) for more detailed information on smoothing of seasonally adjusted time series data.

RELATED PUBLICATIONS AND
SERVICES

- 15** Other ABS publications and services which may be of interest are
- *International Trade, Australia: FASTTRACCS Service - Hardcopy Reports* (5461.0)
 - *Stocks, Selected Industry Sales and Expected Sales, Australia* (5629.0) issued quarterly
 - *Livestock products, Australia* (7215.0) issued monthly
 - *Quarterly Indexes of Industrial Production, Australia* (8125.0)
 - *Manufacturing Industry, Australia: Preliminary* (8201.0) issued annually
 - *Information Paper: Availability of Statistics Related to Manufacturing, 1996* (8205.0), released on 21 March 1996
 - *Manufacturing Industry, Australia* (8221.0) issued annually
 - *Manufacturing Production, Australia: Principal Commodities Produced, 1989-90* (8365.0)

- *The Australian Mining Industry, Australia* (8414.0) issued annually

Additional manufacturing production data are collected by the ABS through user funded surveys and are available to users as a special data service. These series are:

domestic refrigerators
 domestic deep-freezers
 water heaters
 clothes drying machines
 domestic cooking stoves, ovens and ranges
 space heaters
 mowers
 air conditioners
 audio cassette tapes
 audio compact discs
 liquid supply or production meters
 brass bars, rods and sections
 strip for retreading rubber tyres
 electricity
 gas
 semi-trailers
 mineral waters and aerated waters
 starches, wheat gluten and glucose
 beer
 ham and bacon and canned meat
 ready mixed concrete
 concrete blocks, bricks and pavers
 roof tiles
 clay bricks
 Portland cement
 mattresses and mattress supports
 knitted underwear
 foundation garments

A more detailed breakdown of most published series is also available as a special data service.

For further information, please call Jeff Middleton on (02) 268 4541.

16 Current publications produced by the ABS are listed in the *Catalogue of Publications and Products, Australia* (1101.0). The ABS also issues, on Tuesdays and Fridays, a *Release Advice* (1105.0) which lists publications to be released in the next few days. The Catalogue and Publications Advice are available from any ABS office.

NUMERICAL ROUNDING

17 Estimates of change shown in this publication have been calculated using unrounded estimates and may be different from, but are more accurate than, movements obtained from the rounded estimates.

SYMBOLS AND OTHER USAGES

| | |
|--------|---|
| n.a. | not available |
| n.y.a. | not yet available |
| r | figure or series revised since last issue |

TECHNICAL NOTE

SENSITIVITY ANALYSIS

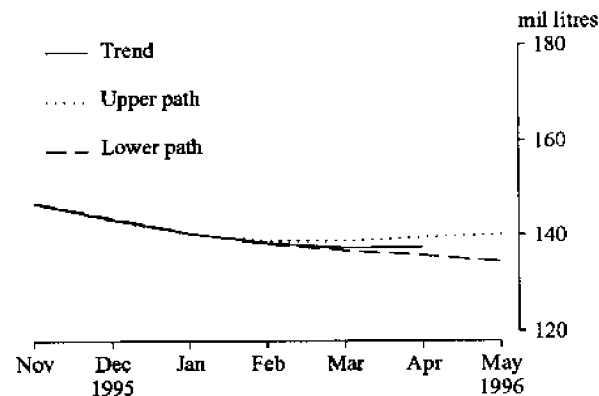
Where seasonally adjusted series are known to be highly erratic, an analysis of how sensitive the current trend estimates are to additional data can be useful. Such analysis is referred to as 'sensitivity analysis'.

Readers should exercise care when interpreting the latest month's trend estimates because they will be revised when the next month's seasonally adjusted estimates become available. For further information, see Explanatory Notes 12 and 13.

- Example** The graph below presents the effect of two possible scenarios on the current and previous trend estimates;
- Upper path** The May 1996 seasonally adjusted estimate of the production of beer is higher than the April 1996 seasonally adjusted estimate by 5%.
- Lower path** The May 1996 seasonally adjusted estimate of the production of beer is lower than the April 1996 seasonally adjusted estimate by 5%.

The percentage change of 5% was chosen because the average monthly absolute percentage change for this series since January 1965 has been 5%.

M11. BEER
(Average movement 5%)



GLOSSARY

| | | |
|------------|--------------------------------------|--|
| M1 | Red meat | Includes veal, pork and buffalo. |
| M2 | Chicken meat | Expressed in the dressed weight of whole birds, pieces and giblets. |
| M3 | Cheese | Includes fresh cheeses such as ricotta, cottage, cream and quark. |
| M4 | Butter | Includes direct butter oil. |
| M5 | Flour of wheat or of meslin | Excludes self raising flour. |
| M6 | Prepared foods from cereals | Prepared foods obtained by the swelling or roasting of cereals or cereal products. |
| M7 | Biscuits | Sweet biscuits and other biscuits, waffles, wafers and ginger bread; excludes dog biscuits. |
| M8 | Chocolate based confectionery | Includes confectionery containing chocolate; excludes chocolate biscuits and chocolate intended for further manufacturing. |
| M9 | Other confectionery | Excludes chocolate based confectionery. |
| M10 | Malt | Includes malt flour. |
| M11 | Beer | Includes ale and stout; excludes low alcohol beer containing less than 1.15% but more than 0.5%, by volume of alcohol. |
| M12 | Tobacco and cigarettes | Includes those containing tobacco substitutes. |
| M13 | Man-made fibre woven fabric | Broadwoven fabric of, or predominantly of, synthetic staple fibres and/or filament. |
| M14 | Cotton woven fabric | Broadwoven fabric of, or predominantly of, cotton; excludes gauze. |
| M15 | Cotton yarn | Of, or predominantly of cotton, reported on a single yarn basis; excludes sewing thread. |
| M16 | Wool yarn | Of, or predominantly of, wool or fine animal hair. |
| M17 | Wool woven fabric | Broadwoven woollen and worsted fabrics of, or predominantly of, wool or fine animal hair. |
| M18 | Textile floor coverings | Consisting of carpets, carpeting (excluding underfelt), floor rugs, mats and matting of, or predominantly of, textile materials. |
| M19 | Footwear | Other than sports footwear; excludes thongs. |
| M20 | Sports footwear | Includes ski-boots. |
| M21 | Newsprint | Excludes directory paper, mechanical and printing paper. |
| M22 | Wood pulp | Expressed as air-dried weight. |

| | |
|---|---|
| M23 Unlaminated particle board | Particle or similar boards of wood or other ligneous materials whether or not for subsequent conversions to other purposes; excludes fibreboard and fibre paperboard. |
| M25 Paperboard containers | Includes corrugated paperboard and solid paperboard containers. |
| M26 Automotive gasoline | Produced by Australian refineries from imported and indigenous petroleum. |
| M27 Fuel oil | Oils derived from the distillation of petroleum which are generally used for domestic heating or fuelling furnaces; produced by Australian refineries from imported and indigenous petroleum. |
| M28 Aviation turbine fuel | Produced by Australian refineries from imported and indigenous petroleum. |
| M29 Automotive diesel oil | Produced by Australian refineries from imported and indigenous petroleum. |
| M30 Plastics in primary forms | Includes liquid, paste, powder, granules, flakes, blocks, irregular shapes, lumps and similar forms. |
| M31 Rigid PVC tubes, pipes and hoses | Plastic tubes, pipes and hose of rigid polyvinyl chloride. |
| M32 Polyethylene bottles up to two litres | Plastic bottles of polyethylene, up to and including two litres. |
| M33 Paint | Includes architectural, decorative and industrial enamels and clears, heavy duty coatings and wood stains; marine coatings are included from January 1995. |
| M34 Superphosphates | Expressed in terms of single super phosphate (9% P equivalent). |
| M35 Portland cement | Excludes portland cement clinker and portland cement used to make blended portland cement in-house. |
| M36 Clay bricks | Saleable bricks removed from kiln; excludes firebricks and bricks for other than structural purposes. |
| M37 Ready mixed concrete | Excludes production used or for use within the same business. |
| M38 Basic iron, spiegeleisen and sponge iron | In pigs, blocks and other primary forms; includes pig iron. |
| M39 Blooms and slabs of iron or steel | Continuous cast; includes steel in the molten state. |
| M40 Insulated wire | Includes cables and other insulated electrical conductors; excludes coaxial cables and automotive low voltage wire and ignition wiring sets. |
| M41 Cars and station wagons | Cars and station wagons for less than 10 persons; excludes mini-buses, passenger mini-vans. |

| | | |
|------------|--|---|
| M42 | Vehicles for goods and materials | Excludes off-highway trucks, fork lift trucks and semi-trailers. |
| M43 | Telephones | Excludes keyphones. |
| M44 | Domestic refrigerators | One and two door models, includes combination refrigerator freezers. |
| M45 | Water heaters | Includes solar. |
| M46 | Domestic clothes washing machines | Of a dry linen capacity not exceeding 10 kilograms. |
| M47 | Electric motors | Includes direct current generators; excludes motors and generators for motor vehicles and aircraft. |
| M48 | Electricity | Excludes purchases or transfers in of electricity. |
| M49 | Gas | Gas available for issue through mains, including natural gas. |
| Q1 | Men's and boys' long trousers | Excludes jeans and waterproof trousers and trousers made as part of a complete suit. |
| Q2 | Women's and girls' long trousers | Excludes jeans and waterproof trousers. |
| Q3 | Jeans | Men's, women's, boys' and girls' jeans; excludes shorts. |
| Q4 | Men's and boys' shirts | Excludes sweatshirts and nightshirts. |
| Q5 | Women's shirts and blouses | Excludes sweatshirts and nightshirts. |
| Q6 | Undressed sawn timber | Expressed in terms of green off saw volumes. |
| Q7 | Hardwood woodchips | Expressed as greenweight; excludes chips which are not sold or are used in own works. |
| Q8 | Alumina | Aluminium oxide. |
| Q9 | Zinc | Primary origin only. |
| Q10 | Silver | Refined. |
| Q11 | Copper | Primary origin only. |
| Q12 | Lead | Includes lead content of lead from primary sources. |
| Q13 | Tin | Primary origin only. |
| Q14 | Gold | From primary and secondary sources. |

For more information . . .

The ABS publishes a wide range of statistics and other information on Australia's economic and social conditions. Details of what is available in various publications and other products can be found in the ABS Catalogue of Publications and Products available from all ABS Offices.

ABS Products and Services

Many standard products are available from ABS bookshops located in each State and Territory. In addition to these products, information tailored to the needs of clients can be obtained on a wide range of media by contacting your nearest ABS Office. The ABS also provides a Subscription Service for standard products and some tailored information services.

National Dial-a-Statistic Line

0055 86 400

Steadycom P/L: premium rate 25c/21.4 secs.

This number gives 24-hour access, 365 days a year, for a range of important economic statistics including the CPI.

Internet

<http://www.statistics.gov.au>

A wide range of ABS information is available via the Internet, with basic statistics available for each State, Territory and Australia. We also have Key National Indicators, ABS product release details and other information of general interest.

Sales and Inquiries

Keylink STAT.INFO/ABS
X.400 (C:Australia,PUB:Telememo,O:ABS,FN:STAT,SN:INFO)
Internet stat.info@abs.telememo.au

National Mail Order Service (06) 252 5249
Subscription Service 1800 02 0608

Information Inquiries Bookshop Sales

| | | | |
|-----------|-------|-----------|-----------|
| SYDNEY | (02) | 268 4611 | 268 4620 |
| MELBOURNE | (03) | 9615 7755 | 9615 7755 |
| BRISBANE | (07) | 3222 6351 | 3222 6350 |
| PERTH | (09) | 360 5140 | 360 5307 |
| ADELAIDE | (08) | 237 7100 | 237 7582 |
| HOBART | (002) | 205 800 | 205 800 |
| CANBERRA | (06) | 252 6627 | 207 0326 |
| DARWIN | (089) | 432 111 | 432 111 |

Client Services, ABS, PO Box 10, Belconnen ACT 2616

